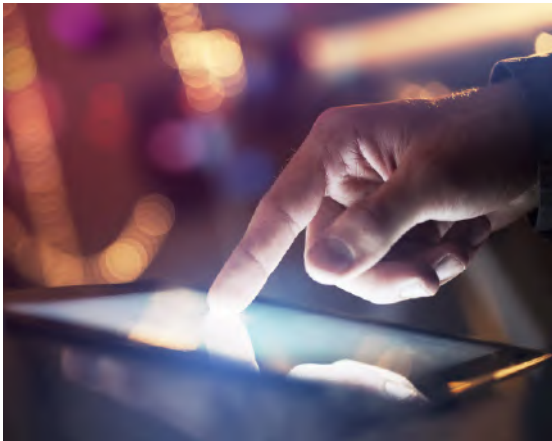
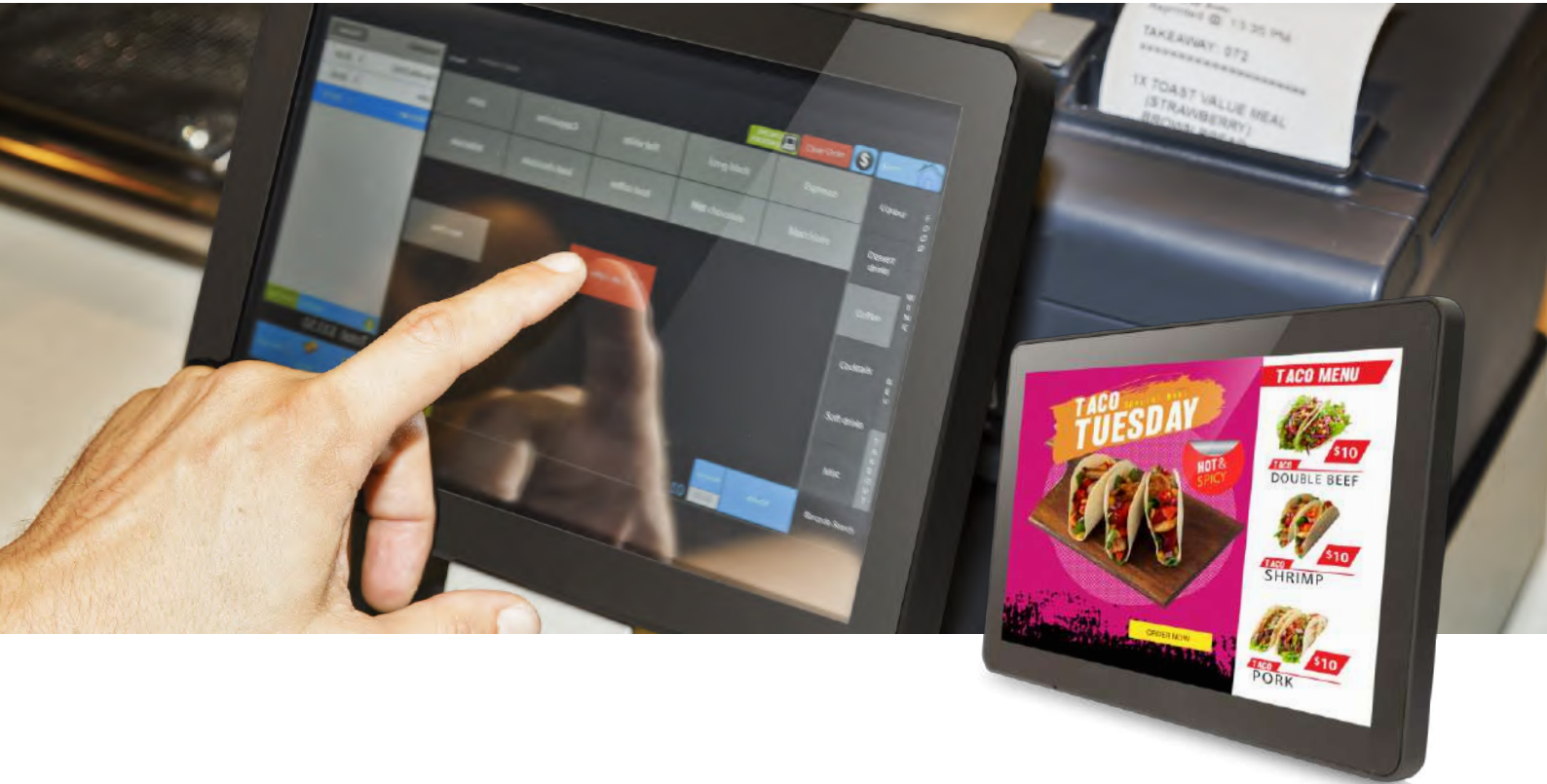




AOPEN

Bright Ideas Connected

eTILE



Commercial all-in-one Fanless, Slim & Robust for Kiosk

AOPEN eTILE15-FP2 is a slim and commercial all-in-one interactive touch display for Kiosk applications. With the AiCU an Intelligent Device. Management Service Ready, its Cloud service through out-of-band control in Intel SoC platform. Frame protection design for IK compliance with metal chassis design, hidden keypad, IP compliance dust and water-proof and Full HD panel can be fully utilized in your self-Kiosk enclosure or commercial counter-table mounted applications.

The eTILE 15M-FP2 features:

- + Fanless design
- + HEVC/H.265 and extended power switch
- + Metal chassis for embedded structure with IK07 and IP65 grade front panel, an IPX2 rear panel and 7H hardness
- + Bezel to avoid a cracked screens

eTILE 15M-FP2



Model name		eTILE 15M-FP2
Housing Material		IP Metal Design
Dimension	W x H x D (mm)	397.1 x 246.6 x 36.15 mm
	W x H x D (inch)	15.63 x 9.71 x 1.42 inch
Weight		3.2 kg / 1.63 lbs
CPU		Intel® Celeron® Processor J3455 (Quad Core)
Chipset		CPU built-in
Memory	Channel	Dual Channel
	Type	DDR3L SO-DIMM x 2
	Data Rate	1866 MHz
	Memory	2GB x 2
Graphics		Intel® HD Graphics 500 / 505
Front Panel	Resolution	15.6" 1920 x 1080 (16:9)
	Max Brightness	250 NITS
	Panel Type	Vertical Alignment
	Viewing Angle	178 / 178
	Response Time	25ms
	Contrast Ratio	1000:1
	Touch	PCT supports 10 points
Expansion slot		M.2 2242 key B for SSD, M.2 2242 key B for AiCU/LTE/SSD, M.2 2230 key E for wifi
Audio	Type	Realtek HD Audio Codec ALC269
	Channel	2 Channel
LAN		Realtek RTL8111G 10 / 100 / 1000 Mbps
Storage		M.2 2242 (Default 64GB)
Security		Hidden Keypad, Secure Cable Cover

Storage Bay		-	
Front Camera		-	
Side Panel I/O	Power Button	x 1	
	Brightness Up	x 1	
	Brightness Down	x 1	
	HDD indicator	x 1	
System Panel I/O	DC Jack	x 1 (12 ~ 19V)	
	HDMI Out Port	x 1	
	USB 2.0 Port	-	
	USB 3.0 Port	x 4	
	COM Port	x 1 (RJ45)	
	Audio Set	Line-Out	x 1
		Mic-in	x 1
	AiCU Remote LAN	Optional x 1	
	RJ45 LAN	x 1	
	Others	Embedded WiFi Antenna x 2, Extended Power Switch x 1	
Watchdog Timer		1 ~ 255 SEC./min	
IP/IK Grade		IP65 / IK07 (Front), IPX2 (Rear)	
Adapter		90W (19V, 4.74A) AC Adapter	
Input Voltage		AC 100 ~ 240V	
Warranty		2 Years	
TPM		2.0	
Environment			
MTBF		50,000 hrs	
Operating Temperature		0 ~ 40°C (32 ~ 104°F)	
Storage Temperature		-20 ~ 60 °C (-4 ~ 140°F)	
Relative Humidity		90% RH (40°C Non-Condensing)	

Supports:



The specifications depicted may be subject to change without prior notice. All trademarks are copyright of their respective owners. © AOPEN Inc.