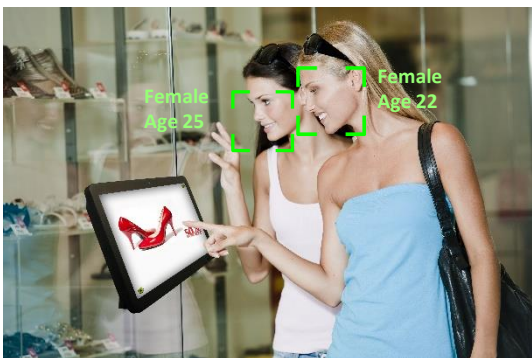




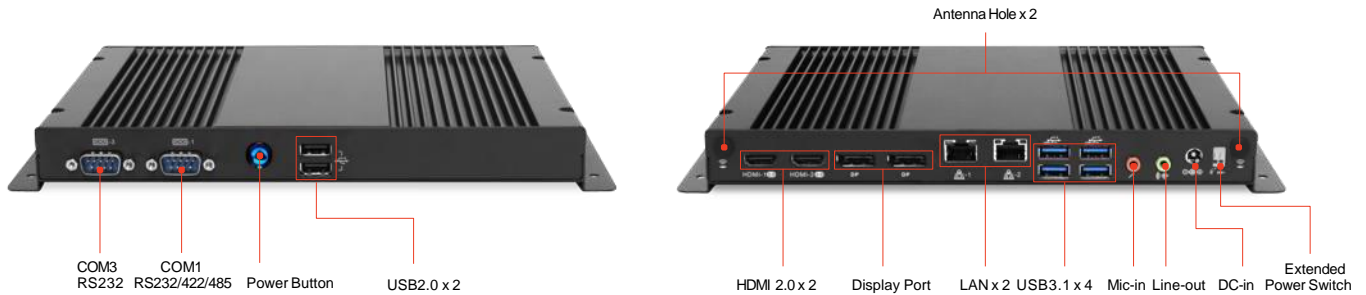
## 小型高效能AI邊緣運算系統 DEX5750



### DEX5750 產品特色

- + 支援第11代Intel®Core™ i3, i5, i7 處理器
- + 整機採無風扇設計，機殼鋁擠散熱佳，無開孔設計有效防止落塵
- + 高效能系統架構適用於運算密集的AI推理及工作負載
- + Intel®Iris®Xe圖形處理，圖像處理性能提高2.95倍
- + 支援Intel® OpenVINO™ 開發工具包
- + 提升AI智能運算與深度學習的速度
- + 小型化薄型設計適合各式邊緣運算方案佈署
- + 適用於戶外的邊緣應用方案 (零下20度低溫的系統運作)
- + 支援DP 8K HDR (7680x4320@60Hz)超高清顯示播放
- + 支援4螢幕獨立顯示播放

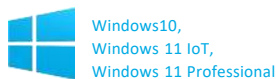
# DEX5750



Model name		DEX5750
Dimension	W x H x D (mm)	240 x 25 x 158 mm
	W x H x D (inch)	9.44 x 0.98 x 6.22 inch
Volume		0.95L
Weight		1.87 kgs / 4.12 lbs
CPU	Socket	CPU on board
	Type	Intel® 11th Gen Tiger Lake UP3 TDP=15W
Chipset	Type	-
Memory	Channel	Dual Channel
	Type	DDR4 SO-DIMM x 2
	Data rate	3200
Max Memory		64GB
Graphics	Chip	Intel® Iris Xe Graphics
Expansion	Mini card	-
	Mini card half size	-
	M.2 2230	x 1
	M.2 2242	x 1
M.2 2280		x 1
Audio	Type	Realtek HD Audio ALC269Q
	Channel	Stereo
LAN		Intel® 2.5GLAN x 1 (i225LM) Intel® GIGA LAN x 1 (i219LM)
		100/1000/2500 Mbps
Storage Bay	2.5" SATA HDD	-
	M.2 SSD	x 2

Front Panel I/O	USB 2.0 Port	x 2	
	USB 3.1 Port	-	
	Others	RS232 x1, RS232/422/485 x1	
Rear Panel I/O	DC Jack	12/24V, 5517 x 1	
	HDMI 2.0 Port	x 2	
	USB 2.0 Port	-	
	USB 3.1 Port	x 4	
	eSATA Port	-	
	RJ45 LAN Jack	x 2	
	Display Port	x 2	
	Audio Set	Line-Out	x 1
		Mic-in	x 1
	Antenna Holes	x 2	
	Kensington Lock Hole	-	
COM Port	-		
Others	Extend power SW x 1		
CPU Thermal Module	AOpen Thermal Module		
WatchDog Timer	1 ~ 255 SEC./ min		
Adapter	90W (19V, 4.74A) AC Adapter		
Input Voltage	AC 100 ~ 240V		
Environment			
MTBF	50,000hrs		
Operating Temperature	-20 ~50°C (-4 ~ 122°F)		
Storage Temperature	-30 ~ 60°C (-22 ~ 140°F)		
Relative Humidity	90% RH (60°C non-Condensing)		

支援:



應用行業:



AI醫學影像辨識  
(高運算及高畫質)



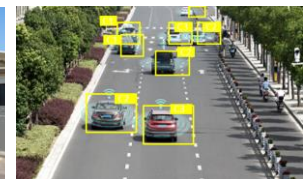
人臉辨識數據  
(高效能影像處理)



AI智能交通及障礙物偵測  
(防震防落塵)



戶外AI智慧應用  
(適應戶外環境溫差)



車牌影像辨識  
(24/7長時間運作)



The specifications depicted may be subject to change without prior notice. All trademarks are copyright of their respective owners. © AOPEN Inc.

V1.4

建基股份有限公司