



AOPEN

Bright Ideas Connected

AOPEN Intelligent Control

The Smart Way to Manage Your Devices, Ensuring Performance,
Saving Cost & Creating profit



The Features



Dashboard

Summary of device type, platform, connectivity, distribution



Devices Info.

Basic information as enrolled time, model name, serial number, setting parameters, location



Applications

Remote adding or updating software



Policies

Set alert triggers, place Windows command to do the specific job as period log uploading



Groups

Differentiate the devices to the groups, easy to control the devices and manage the business by Group concept



Reports

Via download or Email to get device report to view all device status for analysis, verify, and review purpose



Service tool

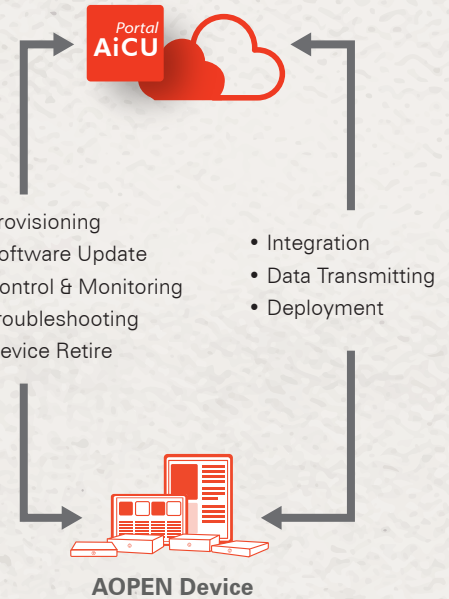
Thru functions as reboot device, screenshots, device deactivation to solve technical problems remotely



Maintenance tool

Thru functions as power on/off, complete restart, SuperRTC, HDMI cable detection, EDID emulators and out-of-band connections

Ecosystem Architecture



AiCU Devices Embedded Control Table

Model	Digital Engine							eTILE		
	DE3450	DEX5550	DE5500	DE6340	DE6340-P	DE6200	DE6200-R	WT19M-FP	WT19M-FP2	WT19M-FKB
Get BIOS Version	v	v	v	v	v	v	v	v	v	v
Get FW Version	v	v	v	v	v	v	v	v	v	v
Power Off	v	v	v	v	v	v	v	v	v	v
Complete Restart	v	v	v	v	v	v	v	v	v	v
Super RTC	v	v	v	v	v	v	v	v	v	v
HW Watchdog Timer	v	v	v	v	v	v	v	v	v	v
Windows OS Recovery	v	v	v	v	v	v	v	v	v	v
EDID Emulator	v	v	v	-	v	-	v	-	v	v
HDMI Cable Detection	v	v	v	v	v	-	v	-	v	v
Out-of-band Connection	-	-	v	v	v	-	v	-	v	v

AOPEN Makes Cloud Device Management Easy

AOPEN Intelligent Control (AiCU) is built for global enterprise brands, AiCU enables network operators with an intelligent device management solution that automates industrial and commercial applications. AiCU brings cloud service and advanced embedded device control technology together into a single dashboard.

Enterprises become more profitable with an efficient workforce and a lower total cost of ownership (TCO). To enable this, AiCU provides a complete overview, with



Over-the-air system updates that minimize operating costs and time



Unique out-of-band connection technology



Lowering TCO for network operators and generating profits with AiCU by ensuring devices are efficiently managed and work effectively for first line workers



Round-the-clock service for continuous, remote device management and repair, even while devices are not running

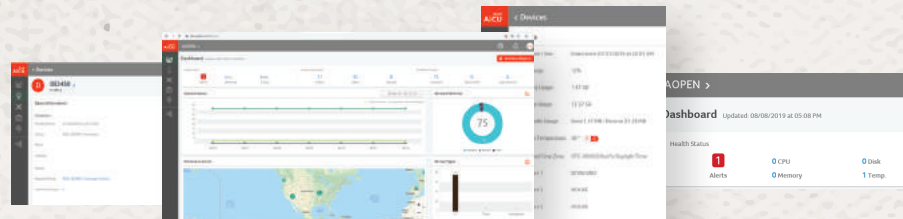


Alert notifications for swift maintenance response times



Hardware-level controller to quickly locate and recover devices

The Smart Way to Manage Your Devices, Ensuring Performance, Saving Cost & Creating profit



Information & Operation Technology

In the current marketplace, cloud-based content deployment and remote device monitoring and management are fundamental to digital transformation. AiCU offers the only comprehensive solution for a cloud-based system that enables rapid business growth for enterprise end users – boosting cost savings and driving process improvements with a premium service that delivers unparalleled device management capabilities. AiCU delivers an easy and powerful management tool for integrators, software providers, managed service providers, and network operators.

Fast Deployments

By applying policies and application program through OTA, operators can deploy and provision large numbers of devices, easily and consistently over a short period

- Group Enrollment
- Provision & Configure

1

Deployments

Easy Maintenance

24/7 connections and automatic alert system makes daily maintenance simple. Overall log files provide insight and enables preventive actions

2

Monitoring

Troubleshooting

- Device Health Status
- Alert management
- Over-the-Air
- Embedded Control
- Out-of-band connection
- On-time Service
- Analytics

3

Troubleshooting

Lifetime Management

5

Lifetime Management

The Active/ De-active function ensures that data is preserved while in use, and then securely removed after retired, or reused for other purposes

4

Quick Recovery

When a remote device fails, you can track it immediately through the AiCU Portal, which means that the embedded hardware controller identifies the root cause of failure quickly and applies recovery actions remotely. The out-of-band connections provide access to the system even when the device is not running properly

Recovery





AOPEN

Bright Ideas Connected



The specifications depicted may be subject to change without prior notice. All trademarks are copyright of their respective owners. © AOPEN Inc.