



AOPEN

Bright Ideas Connected

learn
more





WHY AOPEN?

▶ **AOPEN creates different solutions for different scenarios**

Using our broad in-house knowledge as the backbone for the operation. As well as focusing on digital signage, our devices are also ideal for analytics, surveillance, vending, smart vision and much more.

▶ **Extensive network of partners**

With input from our partners, we manufacture products that drive your personalised solution. Driven by your wishes, our hardware powers static content such as menu boards, or animated content like a video wall. The hardware gathers the analytics and/or process information and sends this information to clients. We also have a wide range of all-in-one touch displays that provides the perfect interactive experience.

▶ **A little historical note**

AOPEN was founded in 1996 in Taiwan as a component manufacturer. Over a period of 20 years, AOPEN developed from a component manufacturer to a small form factor computing device manufacturer. The changes in the computing device market were seen as an opportunity for our small form factor computing devices to penetrate an ever-growing and exciting market.

▶ **World wide distribution channel**

We now operate in more than 100 countries worldwide, and our products are applied in a multitude of scenarios with a vision of penetrating more markets.

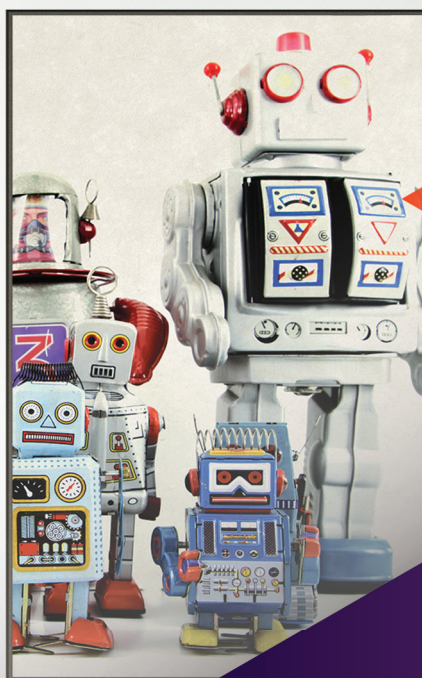
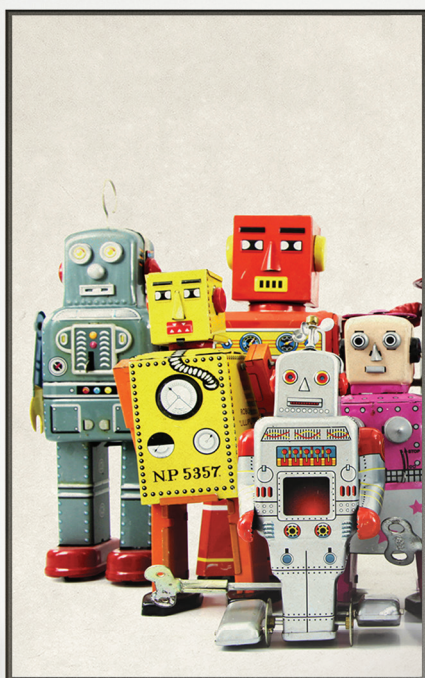
▶ **The right solution for each scenario**

Whether you are looking for a solution based on Windows, Linux or Chrome, AOPEN offers them all. If you are looking for a player, or an all-in-one solution; AOPEN has got you covered.





AOPEN
Bright Ideas Connected



COMPUTING PLATFORM

Digital Engine Range

DIGITAL ENGINE RANGE

- ▶ **Semi-industrial grade hardware**
The AOPEN computing platform is created for 24/7 use in tough environments. Dusty clothing stores and greasy restaurants are no issue because of the fanless design.
- ▶ **Supports Windows and Linux**
Furthermore, AOPEN offers general Microsoft Windows images, pre-imaging services, the creation of custom images, customised BIOS, multi-bundle images and Windows recovery sticks.
- ▶ **Enhanced stability**
This is due to purpose-built operating systems, devices and long product life cycles of up to five years.
- ▶ **Standardised form factor**
The Digital Engine series and Chromebox Commercial are set to specific measurements: 166 mm wide, 157 mm deep and a maximum of 48 mm high. Mounting behind screens is easy because of this small form factor and also, because of the standardised width and depth you don't need to replace your mounting solution or kiosk, as long as you stick to the AOPEN Digital Engine platform.
- ▶ **AOPEN added value**
AOPEN offers global support with local EU tech support, RMA services and spare parts, 50.000 MTBF and options for OEM. Services such as a customised BIOS, customised images, multibundle images, extended warranty, and Windows recovery sticks are also among the possibilities.



APPLICATIONS

Digital Engine Range



Digital Signage in Retail

Interact, attract, promote and inform your customers in all shops with a few simple clicks. Use video walls with fancy videos or a simple signage screen for windows to attract passersby. Promote a new collection or upscale the attention for the sale with digital signage. Drive up to four screens in one go.

Digital Menu boards in QSR

Digital menu boards provide the ability to show menus and prices in an attractive way. Promote products that have high stock levels, or delete the ones that are out of stock. The perfect menu board solution needs multiple output media players and they must cope with high temperatures and grease.

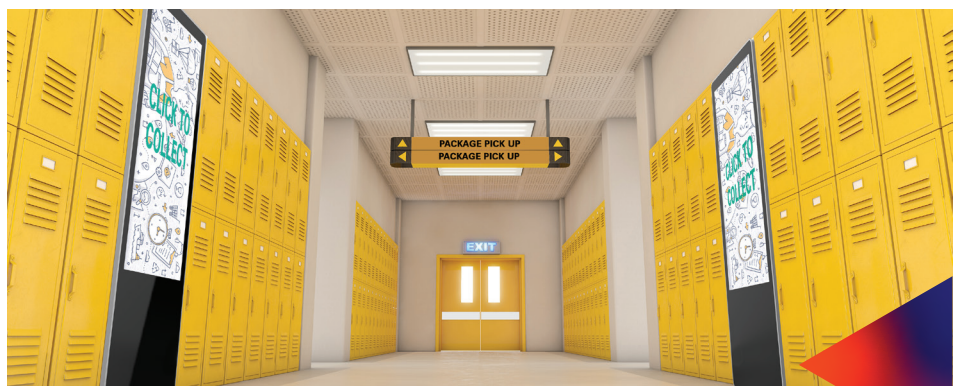


Smart Kiosk in QSR

Self-service ordering kiosks create an interactive method for customers to use when ordering. The customer selects the items they want to purchase, enters special requirements and receives a table stand with a tracker. Via a screen in the kitchen, staff knows where the order should be served.

Smart Vending in Retail

There is a trend in vending machines to dispense underwear, socks or other small products. These vending machines can be placed in-store, or just outside for 24/7 operation. In commercial environments it is key that hardware can be operated by different target groups, is tamperproof and available 24/7.



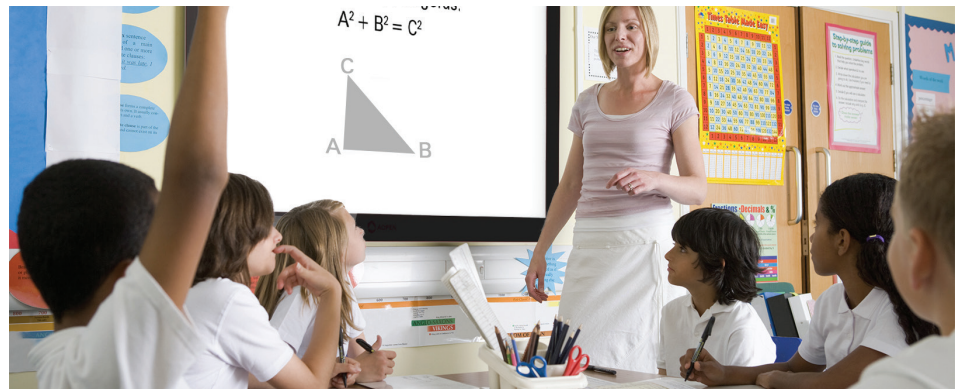


Smart Kiosk in Transportation

Purchase tickets via an interactive kiosk or load subscriptions or budget onto a public transportation card. You can also install kiosk systems where customers fill in their place of departure and destination to calculate their route. The AOPEN computing platform offers different solutions that fit this application.

Surveillance in Education

Control your school by installing a surveillance system. Choose one with automated notifications in case of an emergency, or one where you can review arguments or even fights. Combine the entire AOPEN hardware platform to create a complete solution. Keep schools, their students and their staff, safe!



Digital Signage for Government

Communicate rules and regulations for government buildings or entertain guests who are in the waiting room. Digital signage provides a distraction when used as information screens for news feeds and updates on the queue. Digital signage makes it easy to inform and communicate.

Digital Signage for Enterprises

For enterprises, digital signage finds its main value in showing corporate videos. Inspire and convince customers of your added value and USP's. Digital signage in enterprises is also used to show real-time external company news, social media and news feeds. Entertain and inform people who enter your building.



Device Specs

DIGITAL ENGINE



DE3250			DES3200-MSP		DE3450S			
Summary			Computing device with two HDMI outputs and two LAN ports		Fanless design with various COM Ports		A value range, one output, UHD (4K) media player	
Dimensions (WxHxD)			166(W) x 25(H) x 158(D) mm		273 (W) x 35 (H) x 158 (D) mm		166(W) x 25(H) x 158(D) mm	
Volume (Liter)			0.6L		1.50L		0.65L	
Weight	Nett		0.8 kgs / 1.76 lbs		1.9 kgs / 4.18 lbs		0.8 kgs / 1.76 lbs	
	Gross		1.5 kgs / 3.31 lbs		2.1 kgs / 4.62 lbs		1.5 kgs / 3.31 lbs	
CPU			Intel® Celeron® Processor N Series (Quad Core)		Intel® Celeron® Processor N Series (Dual Core)		Intel® Celeron® Processor J/N Series (Dual Core)	
AiCU			-		-		-	
Memory	Channel		Dual Channel		Dual Channel		Dual Channel	
	Type		DDR3L x 2		DDR3L x 2		DDR3L x 2	
	Data Rate		1333		1333		1866	
	Max Memory		8GB		8GB		8GB	
Graphics	Chip		Intel HD Graphics		Intel HD Graphics		Intel HD Graphics 500	
Expansion Slot			x 2 (Full size x1, half size x1)		Mini card full size x1		M.2 2242 (x2), M.2 2230 (x1)	
Audio type			Realtek HD Audio Codec ALC662		Realtek HD Audio Codec ALC662		Realtek HD Audio ALC269Q	
LAN	Chip		Realtek RTL8111G x2		Realtek Gigabit RTL8111G x1		Realtek Gigabit RTL8111H x1	
	Speed		10/100/1000Mbps		10/100/1000Mbps		10/100/1000Mbps	
Storage	2.5" Bay		-		x 1		-	
	mSATA		x 1		x 1		-	
	M.2 SSD		-		-		x 1	
Front panel I/O	USB 2.0 Port		x 2		x 2			
	USB 3.0 Port		-		-		x 2	
	Others		eSATA x1, COM x1, SD slot x1		-		RS232 DB9 x1 Antenna hole x2	
	DC Jack		x 1		x 1		x 1	
Rear panel I/O	VGA Port		-		x 1		-	
	HDMI Port		x 2 (HDMI1.4a)		x 1 (HDMI1.4a)		x 1 (HDMI2.0)	
	DisplayPort		-		-		-	
	USB 2.0 Port		-		x 2		-	
	USB 3.0 Port		-		-		x 2	
	eSATA Port		-		-		-	
	RJ45 LAN		x 2		x 1		x 1	
	COM Port		-		x 1		-	
	Audio Line-out		x 1		x 1		x 1	
	Mic-in		x 1		x 1		x 1	
	Antenna Hole		x 1		x 2		-	
	Kensington Lock		-		x 1		-	
	Others			-		Extended Power Switch + all I/O ports on selected SKU		Extended Power Switch
WiFi			Optional		Optional		Optional	
Bluetooth			Optional		Optional		Optional	
CPU Thermal Module			AOPEN Fanless Design		AOPEN Fanless Design		AOPEN Fanless Design	
WatchDog Timer			1 ~ 255 SEC./ min		1 ~ 255 SEC./ min		1 ~ 255 SEC./ min	
Input Voltage			40W/19V		40W/19V		40W/19V	
Adapter			AC 100 ~ 240V		AC 100 ~ 240V		AC 100 ~ 240V	
Environment	MTBF		50,000hrs		50,000hrs		50,000hrs	
	Operating temp.		0 ~40°C (32 ~ 104°F)		0 ~45°C (32 ~ 113°F)		0 ~45°C (32 ~ 113°F)	
	Storage temp.		-20 ~ 60°C (-4 ~ 140°F)		-20 ~ 60°C (-4 ~ 140°F)		-20 ~ 60°C (-4 ~ 140°F)	
	Relative Humidity		90% RH (40°C Non-Condensing)		95% RH (45°C Non-Condensing)		95% RH (45°C Non-Condensing)	



DE3450	DEX5350	DE5500	DEX5550
Value range UHD (4K) media player with AOPEN intelligent Control Unit	Fanless, powerful computing device	Intel based, two output 4K media player	4K Video playback, slim and fanless design
166(W) x 25(H) x 158(D) mm	240(W) x 25(H) x 158(D) mm	166(W) x 48(H) x 157(D) mm	240(W) x 25(H) x 158(D) mm
0.65L	0.9L	1.25L	0.9L
0.8 kgs / 1.76 lbs	1.4 kgs / 3.09 lbs	1.12 kgs / 2.46 lbs	1.4 kgs / 3.09 lbs
1.5 kgs / 3.31 lbs	2.0 kgs / 4.41 lbs	2.0 kgs / 4.4 lbs	2.0 kgs / 4.41 lbs
Intel® Celeron® Processor J/N Series (Quad Core)	5th Generation Intel® Core™ (i3, i5)	7th Generation Intel® Core™ (i5, i7)	7th Generation Intel® Core™ (i3, i5)
AiCU 1.0	-	AiCU 2.0	AiCU 1.0
Dual Channel	Dual Channel	Dual Channel	Dual Channel
DDR3L x 2	DDR3L x 2	DDR4 x2	DDR4 x2
1866	1333/1600	2133	2133
8GB	16GB	32GB	32G
Intel HD Graphics 500	Intel HD Graphics 5500 / 6000	Intel HD Graphics 610 / 620 / 640 / 650	Intel HD Graphics 620 / 640
M.2 2242 (x2), M.2 2230 (x1)	M.2 2242 (x1), Mini Card HS (x1), Mini Card FS (x1)	M.2 2242 (x2), M.2 2230 (x1)	M.2 2242 (x2), M.2 2230 (x1)
Realtek HD Audio ALC269Q	Realtek HD Audio ALC269Q	Realtek HD Audio ALC269Q	Realtek HD Audio ALC269Q
Realtek Gigabit RTL8111H x2	Intel WGI218LM	Intel Gigabit i210 (x1), i219 (x1)	Intel Gigabit i210-AT (x1), i219 (x1)
10/100/1000Mbps	10/100/1000Mbps	10/100/1000Mbps	10/100/1000Mbps
-	x 1	x 1	-
-	-	-	-
x 1	x 1	x 1	x 1
-	-	-	-
x 2	-	x 2	x 2
RS232 DB9 x1 Antenna hole x2	-	-	-
x 1	x 1	x 1 (5517)	x 1 (5517)
-	-	-	-
x 2 (HDMI2.0x1, HDMI1.4bx1)	x 1 (HDMI1.4a)	x 2 (HDMI2.0)	x 2 (HDMI2.0)
-	x 1	-	-
-	-	-	-
x 2	x 4	x 2	x 2
-	-	-	-
x 2	x 1	x 2AiCU x)	x 2
-	x 2	x 2	x 2
x 1	x 1	x 1	x 1
x 1	x 1	-	-
-	x 2	x 2	x 2
-	-	-	-
Extended Power Switch	Extended Power Switch	Extended Power Switch	Extended Power Switch
Optional	Optional	Optional	Optional
Optional	Optional	Optional	Optional
AOPEN Fanless Design	AOPEN Fanless Design	AOPEN Thermal Module	AOPEN Fanless Design
1 ~ 255 SEC./ min	1 ~ 255 SEC./ min	1 ~ 255 SEC./ min	1 ~ 255 SEC./ min
40W/19V	65W/19V	65W/19V	65W/19V
AC 100 ~ 240V	AC 100 ~ 240V	AC 100 ~ 240V	AC 100 ~ 240V
50,000hrs	50,000hrs	50,000hrs	50,000hrs
0 ~45°C (32 ~ 113°F)	0 ~45°C (32 ~ 113°F)	0 ~50°C (32 ~ 122°F)	0 ~45°C (32 ~ 113°F)
-20 ~ 60°C (-4 ~ 140°F)	-20 ~ 60°C (-4 ~ 140°F)	-30 ~ 60°C (-22 ~ 140°F)	-30 ~ 60°C (-22 ~ 140°F)
95% RH (45°C Non-Condensing)	90% RH (40°C Non-Condensing)	95% RH (50°C Non-Condensing)	95% RH (45°C Non-Condensing)

Device Specs

DIGITAL ENGINE



DE6200		DE6340	DE7400
Summary		3-HDMI-output media player with AMD Eyefinity Technolgy	4-HDMI-output media player with AMD Eyefinity Technolgy
Dimensions (WxHxD)		166(W) x 48(H) x 157(D) mm	166(W) x 48(H) x 157(D) mm
Volume (Liter)		1.25L	1.25L
Weight	Nett	1.12 kgs / 2.46 lbs	1.12 kgs / 2.46 lbs
	Gross	2.0 kgs / 4.4 lbs	2.0 kgs / 4.4 lbs
CPU		AMD EMBEDDED R-SERIES CPU (Quad Core)	AMD EMBEDDED Ryzen V1000 (Quad Core)
AiCU		-	-
Memory	Channel	Dual Channel	Dual Channel
	Type	DDR4 x2	DDR4 x2
	Data Rate	1600/2400	3200
	Max Memory	16GB	32GB
Graphics	Chip	AMD Radeon R7 series HD Graphics	AMD Radeon Vega 11 Graphics
Expansion Slot		M.2 2242 (x2), M.2 2230 (x1)	M.2 2242 (x2), M.2 2230 (x1)
Audio type		Realtek HD Audio ALC269Q	Realtek HD Audio ALC269Q
LAN	Chip	Realtek Gigabit RTL8111H x1	Realtek Gigabit RTL8111H x1
	Speed	10/100/1000Mbps	10/100/1000Mbps
Storage	2.5" Bay	x 1	x 1
	mSATA	-	-
	M.2 SSD	x 1	x 1
Front panel I/O	USB 2.0 Port	x 2	x 2
	USB 3.0 Port	-	-
	Others	-	-
Rear panel I/O	DC Jack	x 1	x 1
	VGA Port	-	-
	HDMI Port	x 3 (HDMI2.0)	x 4 (HMDI2.0)
	DisplayPort	-	-
	USB 2.0 Port	-	-
	USB 3.0 Port	x 4	x 2
	eSATA Port	-	-
	RJ45 LAN	x 1	x 1
	COM Port	x 1	x 1
	Audio Line-out	x 1	x 1
	Mic-in	x 1	x 1
	Antenna Hole	x 2	x 2
	Kensington Lock	-	x 1
	Others	Extended Power Switch	Extended Power Switch
WiFi		Optional	Optional
Bluetooth		Optional	Optional
CPU Thermal Module		AOPEN Thermal Module	AOPEN Thermal Module
WatchDog Timer		1 ~ 255 SEC./ min	1 ~ 255 SEC./ min
Input Voltage		90W/19V	90W/19V
Adapter		AC 100 ~ 240V	AC 100 ~ 240V
Environment	MTBF	50,000hrs	50,000hrs
	Operating temp.	0 ~50°C (32 ~ 122°F)	0 ~50°C (32 ~ 122°F)
	Storage temp.	-30 ~ 60°C (-22 ~ 140°F)	-30 ~ 60°C (-22 ~ 140°F)
	Relative Humidity	95% RH (50°C Non-Condensing)	95% RH (50°C Non-Condensing)



DE7400-XE

Smallest XEON based computing device in the world today

166(W) x 48(H) x 157(D) mm

1.25L

1.03 kgs / 2.24 lbs

1.9 kgs / 4.18 lbs

Intel® Xeon® Processor E3 v6 Family
(Quad Core, E3-1505MV6)

-

Dual Channel

DDR4 (ECC) x2

2133

16GB

Intel HD Graphics P530 series (GT2)

Mini Card HS (x1), M.2 2230 (x1),
M.2 2242 (x1)

Realtek HD Audio ALC269Q

Intel Gigabit i210-AT (x1), i219LM (x1)

10/100/1000Mbps

x 1

-

x 1

x 2

-

-

x 1

-

x 2 (HDMI1.4b)

x 1 (miniDP)

-

x 2

mini-SAS x1 support SATA x4

x 2

x 1 (3.5mm jack)

x 1

x 1

x 2

x 1

Extended Power Switch

Optional

Optional

AOPEN Thermal Module

1 ~ 255 SEC./ min

90W/19V

AC 100 ~ 240V

50,000hrs

0 ~ 50°C (32 ~ 122°F)

-30 ~ 60°C (-22 ~ 140°F)

95% RH (50°C Non-Condensing)



DE3250

Rugged, powerful & affordable

The DE3250 is a robust media player designed to cope with rugged, tough environments or moving vehicles. The ultra-thin structure allows you to integrate the Digital Engine DE3250 seamlessly into any space. The solid-state disk and fanless design of the DE3250 ensures a first rate performance in any challenging situation.



Intel® Celeron® Processor N Series (Quad Core)



2x Full HD



Fanless and solid-state



Dual LAN ports to create IoT Gateway

DES3200

Multiple output, modular computing device

This computing device has various I/O ports, which makes it the ideal computing device for applications like vending. Think of a smart kiosk that actually dispenses products, or a simple soda machine. There are three available SKU's: one that adds three COM Ports and 2 x USB ports. One that adds 2 x USB, 1 x LAN and 1 x COM Port. And one that adds a 10 pin GPIO.



Intel® Celeron® Processor N Series (Dual Core)



1x Full HD

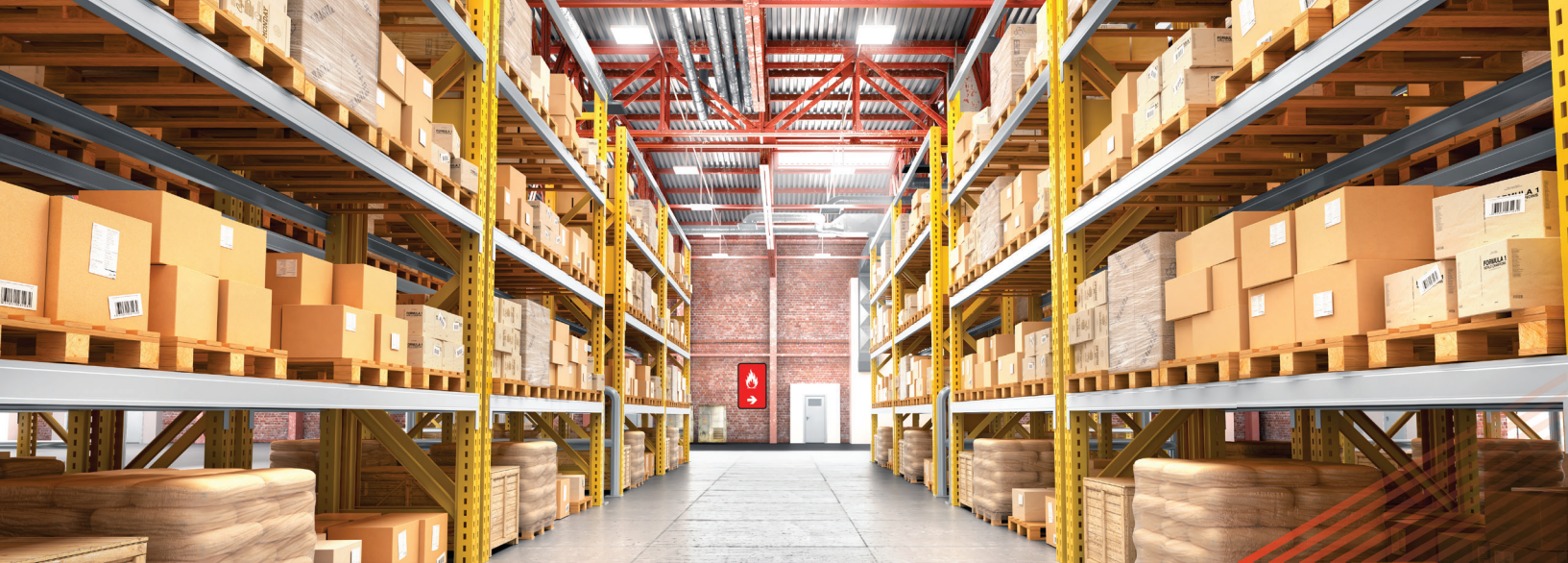


Fanless and solid-state design



Three different SKU's for different I/O available





DE3450S

Cost effective UHD (4K) media player

A value range device based on the reliable Intel® Dual Core Celeron® Processor, which is capable of running UHD playback. The DE3450S supports one Ultra HD (4K@60Hz) resolution display and HEVC/H.265 10 bit high-definition video playback. The fanless and solid-state design makes sure that it is one of the most reliable players in the market today.



Intel® Celeron® Processor J/N Series (Dual Core)



1x UHD (4K) @60Hz



Fanless and solid-state



Value range, good price/quality ratio

DE3450

UHD playback (4K) & excellent connectivity

A value range device based on the reliable Intel® Celeron® Processor N Series (Quad Core), which runs UHD playback. The DE3450 supports two Ultra HD resolution displays and HEVC/H.265 10 bit high-definition video playback. The solid-state disk and fanless design of this player ensure a first rate performance in any challenging situation.



Intel® Celeron® Processor J/N Series (Quad Core)



1x UHD (4K) @60Hz or 2x UHD (4K) @30Hz

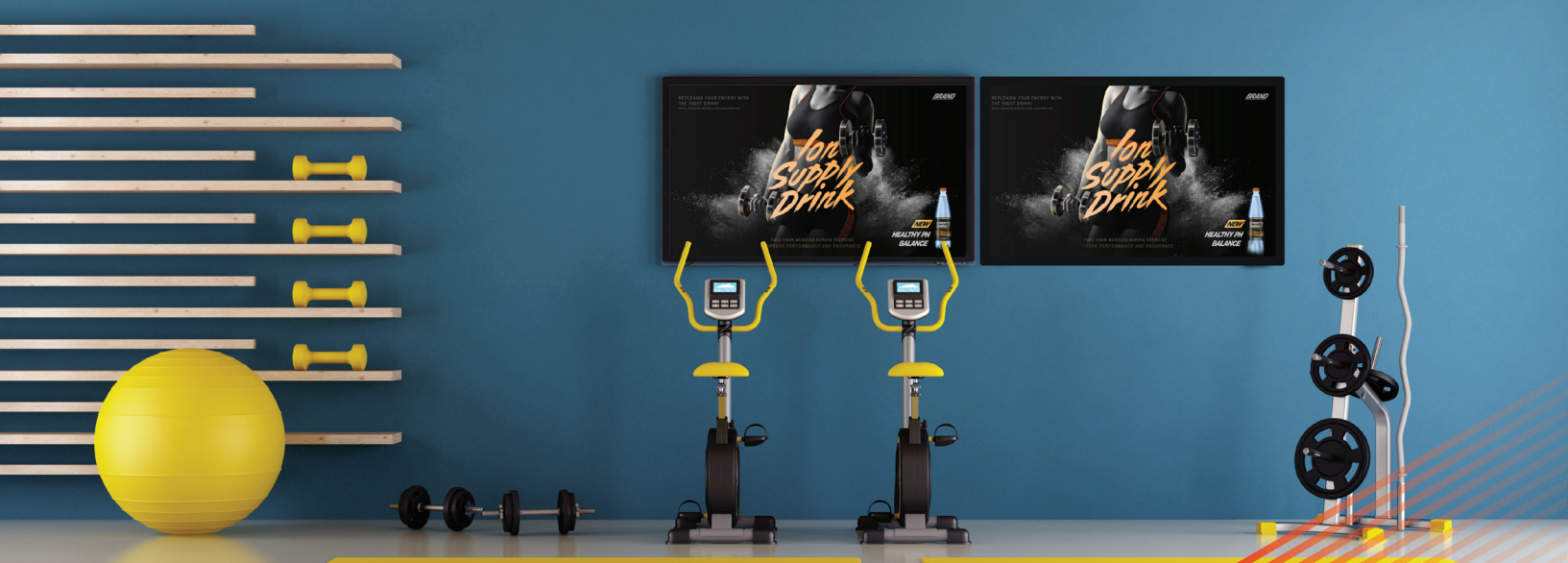


Fanless and solid-state



AOPEN intelligent Control Unit, Version 1.0









DEX5350

Powerful computing & dynamic scheduling



The DEX5350 is a fanless media player with advanced scheduling possibilities. This high-end computing device supports Ultra HD resolution (4K) playback and the slim (25 mm) solid-state design makes the DEX5350 a significant asset to multiple industries including the kiosk market. Available with an Intel® Core™, in i3 and i5.







-  5th Generation Intel® Core™, available in i3 and i5
-  2x UHD (4K) @30Hz or 1x UHD (4K) @60Hz
-  Fanless and solid-state
-  Expansion bay for 2.5" SSD to create RAID configuration

DE5500

High graphics, fast computing

The Digital Engine DE5500 is a mid range computing device, based on the Intel® Core™. It supports i5 and i7. Because of these different SKU's the device is suitable for different applications. Two UHD (4K) screen digital signage is possible because of the two HDMI 2.0 ports. The two COM ports ensure the device is also applicable in, for example, smart kiosk and vending solutions for retail.

-  7th Generation Intel® Core™, available in i5 and i7
-  2x UHD (4K) @60Hz
-  Actively cooled
-  AiCU version 2.0






DEX5550

Fanless, powerful computing device

This high range computing device is slim, fanless, solid-state and capable of running two UHD (4K) screens (@60Hz) and has HEVC/H.265 & VP9 high-definition video playback (hardware accelerated). It supports TPM 2.0 and does all of the above in a slim form factor and with low power consumption. Extremely suitable for signage solutions, or to integrate into a kiosk.

 7th Generation Intel® Core™, available in i3 and i5

 2x UHD (4k) @60Hz

 Fanless and solid-state

 Supports TPM 2.0




DE6200

AMD based three output player for video walls

The Digital Engine® DE6200 is a media player with an AMD embedded R-series Merlin Falcon processor. The HD graphics create a whole new visual experience and are mainly used for digital signage and video walls. Use this device to power static or animated content on menu boards, for promotional purposes, or to display immersive content.

 AMD Embedded R-Series CPU (Dual Core)

 1x UHD (4K) @60Hz or 3x Full HD @60Hz

 Actively cooled

 AMD Eyefinity technology for video wall applications





DE6340

Powerful media player for UHD video walls

The Digital Engine® DE6340 is capable of driving four independent HDMI 2.0 displays with up to 4K @60Hz resolution in each display and supports up to 2x 4K@60Hz or 4x FHD content video playback. The DE6340 is therefore applicable for various types of video walls, menu boards and digital signage. The DE6340 is reliable, secure and is suitable for tough environments.



AMD Embedded Ryzen V1000 (Quad Core)



4x UHD (4K) @60Hz, 4x FHD video playback @60Hz



Actively cooled, dust filters included



HDR 10 bit and AMD Eyefinity technology



DE7400

Redefining high-end possibilities

The DE7400: a computing device with new levels of flexibility, speed and power. The small size of the DE7400, combined with its interior, ensures one of the strongest and most flexible devices on the market today. It drives three UHD screens (4K) at the same time. The DE7400 finds no challenge in serving as a media player for extreme digital signage, analytics, surveillance or any application.



6th generation Intel® Core™, available in i3, i5 and i7



3x UHD (4k) @30 Hz or 1x UHD (4k) @60 Hz + 2x FHD



Actively cooled, dust filters included



High-end calculating power





DE7400 XEON

Based on Intel® XEON fast, flexible and secure

Don't be fooled by its size. The DE7400XE houses an Intel Xeon E3v5 CPU, handles three independent UHD screens, has full HEVC (H265) hardware acceleration and drives 4 external SATA hard disks all at once. High-end signage, surveillance, analytics, virtualisation, an SQL server or a combination of all is no problem for this system.



Intel® XEON



3x UHD (4k) @30 Hz or 1x UDH (4k) @60 Hz + 2x FHD



Actively cooled, dust filters included



Smallest XEON in the world

AOPEN SERVICES FOR THE DIGITAL ENGINE RANGE

GENERAL WINDOWS IMAGE

AOPEN provides you with general Windows images. We work with Windows 10 IoT, because this OS serves the general demand in the market today. This hardened image is optimised for digital signage and is based on our many years of experience.

PRE-IMAGING SERVICE

Our pre-imaging service makes sure a general, custom, multi-bundle or your own image will be installed on your devices. This enables you to spend your time elsewhere.

AMT PROVISIONING

AMT is hardware and firmware technology for out-of-band remote control. We can pre-install AMT-capable devices for you.

CUSTOM IMAGE

AOPEN provides an Operating System adapted to your wishes for your devices. This means you don't have to install, configure and optimise the Operating System for each device. Furthermore, this image will not change prior to your approval and/or request. The result is a reliable, time- and cost saving OS for your system.

WINDOWS RECOVERY STICK

In the unlikely case of a system crash, a recovery stick can easily reset the system to its default settings. A recovery stick contains the Operating System as it was during production and makes sure your system will be recovered in approximately 10 minutes after restarting it.

CUSTOMISED BIOS

To make the installation of our devices easier, we are able to provide you with default settings in the BIOS of your hardware. The settings are completely tailored to your wishes and can vary from pre-set passwords, memory size, company logo during POST (Power On Self Test) and many other settings to personalise your device.

MULTI-BUNDLE IMAGE

Our multi-bundle image is an optimised Windows 10 IoT image with multiple applications for digital signage and surveillance. The only thing left is selecting the software package you want to install.



AiCU

AOPEN intelligent Control Unit

AiCU

AOPEN intelligent Control Unit

The AOPEN intelligent Control Unit for enhanced hardware control is the newest technology developed by AOPEN. Simply said, this is a mini computer in selected models that helps to avoid black screens, gives information about the device and its status, and makes sure the device is only running when necessary. Save time, effort and money with this AOPEN feature.

The AiCU is available on a selected models of the Digital Engine and eTILE range and is available in two different versions.

▶ **AiCU Features**

Below mentioned features can be supported by the AiCU. Depending on the hardware model and programming the features can change.

1. EDID Emulator
2. Super RTC
3. IR Remote Controller
4. HDMI Signal Detection
5. System Data Record
6. WatchDog Timer
7. Power off
8. Forced shutdown
9. System reset
10. OS recovery
11. Hardware monitoring

▶ **Version 1.0**

Control your device using the AiCU module and AOPEN utility software, or integrate directly using the SDK.

When your device has the AiCU 1.0 module integrated to your system, you are able to leverage the features mentioned on the left of this page. As long as the device is operational.

Version 1.0 is available on selected devices. You can find them in the Digital Engine and eTILE specs tables.

▶ **Version 2.0**

Version 2.0 is an add on module to the AiCU 1.0. This out-of band hardware control management tool enables you to control the device from a distance. Even when it's turned off.

Your device can be installed anywhere in the world. Via a dedicated LAN port, you can manage, repair and analyse.

Version 2.0 is available on selected devices. You can find them in the Digital Engine and eTILE specs tables.





CHROME RANGE

Chromebox and Chromebase

CHROME RANGE

▶ **Commercial Grade hardware**

The AOPEN computing platform is created for 24/7 use in tough environments. Dusty clothing stores and greasy restaurants are no issue because of the fanless design.

▶ **Fast, reliable and secure**

The Chrome OS is built to last, it starts up in under 8 seconds and is secured against different threats.

▶ **Different hardware based on Chrome**

In the Chrome range, AOPEN offers both Chromeboxes and Chromebases. The Chromebox is available with one or two outputs. The Chromebase is available in 10 and 22 inch. Furthermore, AOPEN offers a 15 and 19 inch display with the Chromebox integrated for a two-in-one device.

▶ **Chrome CDM licences available**

This easy and powerful tool allows users to remotely control entire fleets of AOPEN Chrome devices.

▶ **Up to five years warranty**

Chrome Mini devices have a standard 1-year warranty, the Commercial Chrome devices have a standard 3-year warranty. Both can be extended up to five years.



APPLICATIONS

Commercial Chrome Devices



Smart Kiosk in Retail

If a product is not available in store, you can place the order at a kiosk. Click-and-collect services are available in a variety of stores, or outside a store for 24/7 use. In commercial environments it is key that hardware can be operated by different target groups, is tamperproof, and available 24/7.

Meeting Room Management

In enterprise environments, especially in large enterprises, meeting room management is needed. Book your desired meeting room from a distance and make sure your spot is reserved. At the meeting room the schedule can be shown on a Chromebase to ensure everybody knows if they can use the room or not.

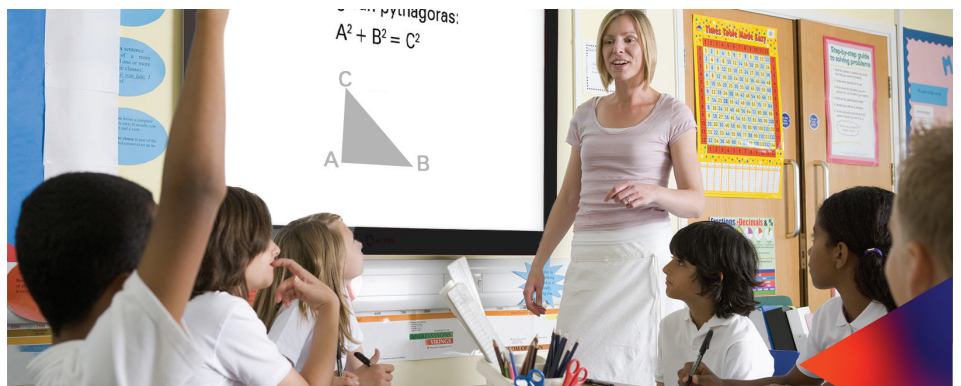


Point of Sale

Every store or restaurant needs a cash register to cash their money. To promote products or discounts, you can install an extra screen to face the customer. In POS, a key consideration is the correct amount of connectivity to the hardware. Combine different Chromebases to create the perfect POS solution.

Interactive Whiteboard

With interactive whiteboards you combine the digital and written world. In education we see a demand for Chrome devices because of their easy implementation, CDM controlled environments and cross platform setup. The AOPEN Chromebox is perfect for digital whiteboard integration.



Device Specs

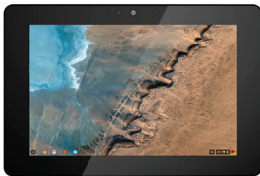
CHROMEBOX



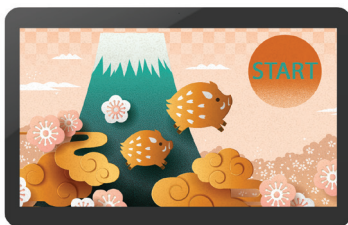
Chromebox Mini		Chromebox Commercial
Summary		Enterprise Grade, one output Chromebox
Dimensions (WxHxD)		146(W) x 23.8(H) x 96.5(D) mm
Volume (Liter)		0.32L
Weight	Nett	0.4 kgs
	Gross	1.0 kgs
CPU		Rockchip RK3288C Quad Core Cortex-A17 1.8 GHz
AiCU		-
Memory	Channel	Dual Channel
	Type	LPDDR3
	Data Rate	1066
	Max Memory	4GB
Graphics	Chip	ARM Mali-T764
Expansion Slot		-
Audio type		Maxim MX98090
LAN	Chip	Gigabit
	Speed	10/100/1000Mbps
Storage	2.5" Bay	-
	mSATA	16 GB SSD on board
	M.2 SSD	-
Front panel I/O	USB 2.0 Port	x 3
	USB 3.0 Port	-
	Others	-
		RJ50-RS232: 1, mSD Card Slot: 1
Rear panel I/O	DC Jack	x 1
	VGA Port	-
	HDMI Port	x 1
	DisplayPort	-
	USB 2.0 Port	-
	USB 3.0 Port	-
	eSATA Port	-
	RJ45 LAN	x 1
	COM Port	-
	Audio Line-out	-
	Mic-in	-
	Antenna Hole	x 2
	Kensington lock	x 1
	Others	Extended Power Switch
WiFi		802.11 ac/b/g/n (on board)
Bluetooth		Bluetooth 4.0 (on board)
CPU Thermal Module		AOPEN Fanless Design
WatchDog Timer		-
Input Voltage		19V / 40W
Adapter		AC 100 ~ 240V
Environment	MTBF	50,000hrs
	Operating temp.	0 ~ 40°C (32 ~ 104°F)
	Storage temp.	-10 ~ 60°C (14 ~ 140°F)
	Relative Humidity	90% RH (40°C Non-Condensing)

Device Specs

CHROMEbase



Chromebase Mini			CrOS Touch 15			
Summary		Enterprise ready 10" all-in-one touch solution		15" 2-in-1 solution, powered by the Chromebox Mini		
Dimensions (WxHxD)		270(W) x 179(H) x 29,97(D) mm		395,1(W) x 244,6(H), 38(D) mm		
Panel	Resolution	10,1" 1280 x 800 (16:10)		15,6", 1920 x 1080 (16:9)		
	Brightness	250 NITS		250 NITS		
	Panel Type	AHVA		VA		
	Viewing Angle	178/178		160/160		
	Response Time	18ms		25ms		
Weight		1,22 kgs		3,3 kgs		
Webcam		FHD Webcam (2M Pixel)		-		
WatchDog Timer		-		-		
AiCU		-		-		
CPU		Rockchip RK3288C Quad Core Cortex-A17 1.8 GHz		Rockchip RK3288C Quad Core Cortex-A17 1.8 GHz		
Memory	Channel	Dual Channel		Dual Channel		
	Type Channel	LPDDR3		LPDDR3		
	Data Rate	1066		1066		
	Max Memory	4GB (on board)		4GB (on board)		
Graphics	Chip	ARM Mali-T764		ARM Mali-T764		
Expansion slot	m.2 Slot	-		-		
	mSATA	16G SSD (on board)		16G SSD (on board)		
Audio	Type	Maxim MX98090		Maxim MX98090		
	Channel	Stereo		Stereo		
LAN	Chip	Gigabit		Gigabit		
	Speed	10/100/1000Mbps		10/100/1000Mbps		
Kensington Lock		x 1		x 1		
Side Panel I/O	Hidden Power Button	x 1		-		
Touch Panel		Multi Touch PCT		Multi Touch PCT		
System I/O	DC 19V/20V Jack	x 1		x 1		
	HDMI Out Port	x 1		-		
	USB 2.0 Port	-		x 4		
	USB 3.0 Port	-		-		
	RJ45 LAN Jack	x 1		x 1		
	COM Port	-		x 2 RJ50		
	Audio	Line-Out	-		-	
		Mic-In	-		-	
WiFi Antenna		Embedded Antenna		Embedded Antenna + Punch out holes for external antenna		
CPU Thermal Module		AOPEN Fanless Design		AOPEN Fanless Design		
IP Grade		IP54		IP65		
Adapter		40W/19V		19V		
Input Voltage		AC 100 ~ 240V		AC 100 ~ 240V		
Environment	MTBF	50,000hrs		50,000hrs		
	Operating Temp.	0 ~ 40°C (32 ~ 104°F)		0 ~40°C (32 ~ 104°F)		
	Storage Temp.	-20 ~ 60°C (-4 ~ 140°F)		-10 ~ 60°C (14 ~ 140°F)		
	Relative Humidity	90% RH (50°C Non-Condensing)		90% RH (40°C Non-Condensing)		



CrOS Touch 19

19" 2-in-1 solution, powered by the Chromebox Mini

492,6(W) x 306,6(H), 40,8(D) mm

19,5", 1920 x 1080 (16:9)

250 NITS

VA

178/178

25ms

5,54 kgs

-

-

-

Rockchip RK3288C
Quad Core Cortex-A17 1.8 GHz

Dual Channel

LPDDR3

1066

4GB (on board)

ARM Mali-T764

-

16G SSD (on board)

Maxim MX98090

Stereo

Gigabit

10/100/1000Mbps

x 1

-

Multi Touch PCT

x 1

-

x 4

-

x 1

x 2 RJ50

-

-

Embedded Antenna + Punch out holes for external antenna

AOPEN Fanless Design

IP65

19V

AC 100 ~ 240V

50,000hrs

0 ~ 40°C (32 ~ 104°F)

-10 ~ 60°C (14 ~ 140°F)

90% RH (40°C Non-Condensing)

Chromebase Commercial

Commercial Grade 22" all-in-one touch solution

526(W) x 333.4(H) x 33(D)mm

21.5" 1920 x 1080 (16:9)

250 NITS

VA

178/178

18ms

6,49 kgs

HD Webcam

-

-

Intel® Celeron® Processor N Series
(Quad Core)

Dual Channel

LPDDR3

1333

4GB (on board)

Intel Integrated

-

32G SSD (on board)

Maxim MX98090

Stereo

Realtek RTL8111H

10/100/1000Mbps

x 1

x 1

Multi Touch PCT

x 1

x 1

x 6

-

x 1

x 4 Powered (12v, 5v, 0v selectable)

x 1

x 1

Embedded Antenna

AOPEN Fanless Design

IP65

65W/19V

AC 100 ~ 240V

50,000hrs

0 ~ 40°C (32 ~ 104°F)

-10 ~ 60°C (14 ~ 140°F)

90% RH (40°C Non-Condensing)



Chromebox Mini

An enterprise ready, one output media player

Small, but powerful: the smallest enterprise-ready Chromebox today, designed for the signage, POS, corporate, and kiosk markets. Empowering customers with ease of experience and greater control of in-store engagement. The AOPEN Chromebox Mini is a highly reliable and powerful enterprise grade solution that operates 24/7 under tough conditions .



Rockchip Rockchip RK3288C Quad Core Cortex-A17 1.8 GHz

FHD 1x Full HD

FANLESS Fanless and solid-state

↓ Smallest enterprise grade solution in the market

Chromebox Commercial

Commercial grade, two output media player

The Chromebox Commercial is a highly reliable small form device (25mm high) that can power digital displays and vertical applications such as kiosks or public transport information systems. It has powered legacy and commercial ports and can easily fit behind displays and small spaces. The device is also solid-state, fanless and can be used in combination with the Chrome Device Management licence.

Intel Intel® Celeron® Processor N Series (Quad Core)

FULL HD 2x Full HD

FANLESS Fanless and solid-state

Commercial Commercial grade, created for tough environments





Chromebase Mini

Enterprise grade all-in-one touch solution

Introducing the Chromebase Mini 10" multi-touch solution, an ultra-thin and powerful device specifically designed for commercial and corporate use with a good touch experience. The Chromebase Mini is a solid-state interactive solution designed to be extremely reliable and secure, making it ideal for interactive public displays in high traffic environments.



Rockchip Rockchip RK3288C Quad-Core Cortex-A17 1.8 GHz

DISPLAY 10,1", 1280 x 800px, 250 nits, AHVA panel

FANLESS Fanless and solid-state

ENTERPRISE Enterprise grade solution

CrOS Touch 15"

15" 2-in-1 solution, powered by the Chromebox Mini

A 15" 2-in-1 solution, based on the Chromebox Mini, which functions as an all-in-one touch solution. The Chromebox mini is integrated inside the touch screen. This solution easily runs Full HD content and is capable of running different applications based on Chrome OS. The 15 inch touch screen ensures an interactive experience that works within different environments.

Rockchip Rockchip RK3288C Quad Core Cortex-A17 1.8 GHz

FHD 15,6", 1920 x 1080px, 250 nits, VA panel

FANLESS Fanless and solid-state

2-IN-1 Two-in-one solution





CrOS Touch 19"

19" 2-in-1 solution, powered by the Chromebox Mini

A 19" 2-in-1 solution, which combines the Chromebox Mini with a touch display. This interactive solution is perfect for smart kiosks, room booking or check-in systems in different environments, such as retail, enterprises and schools. By integrating the Chromebox Mini and the screen, no extra cables are needed, which ensures a tamperproof solution for commercial environments.

Rockchip Rockchip RK3288C Quad Core Cortex-A17 1.8 GHz

FHD 19,5", 1920 x 1080px, 250 nits, VA panel

FANLESS Fanless and solid-state

Two-in-one solution



Chromebase Commercial

Commercial grade 22" all-in-one touch solution

The 22" Chromebase Commercial is a robust multimedia display that is well suited to be used in kiosk or commercial environments. It has WiFi, Bluetooth and Ethernet capabilities as well as hardware level security and encryption. It also has a high quality 16:9 Full HD LCD screen to enhance the interactive experience.

AMD Intel® Celeron® Processor N Series (Quad Core)

DISPLAY 21,5", 1920 x 1080, 250 nits, VA panel

FANLESS Fanless and solid-state

Commercial grade solution



CHROME SERVICES

AOPEN add on value

AOPEN Services to fit your commercial solution. Our objective is to optimise the product life cycle through value-added services for our customers, while promoting the integration of business services.

Commercial Chrome devices have custom Chromeservices. For Chrome we offer a white glove service, CDM and perpetual and annual single kiosk licences. These are of great value for a more flexible and easier installation.

▶ **SINGLE KIOSK LICENCE**

The single kiosk licence is very similar to the CDM licence. It is however, less expensive because it is not possible to configure any user policies.

▶ **WHITE GLOVE SERVICE**

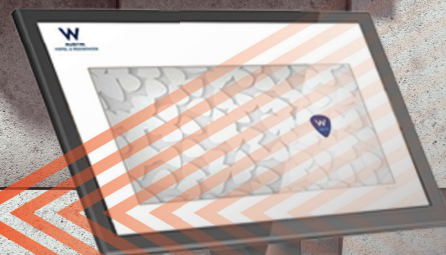
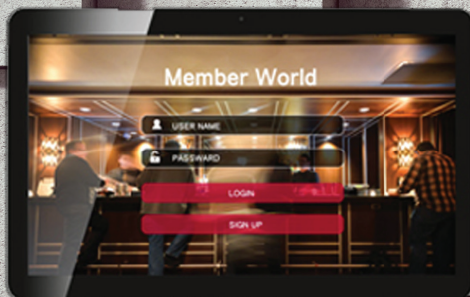
The white glove service allows our clients to relax and let AOPEN do all the hard work. This service delivers an instantly ready device where you - as a figure of speech - only have to push the button to set everything in motion. Examples include enrolling your device in CDM, updating your device to the latest OS update, wireless network configurations and many more.

▶ **CDM LICENCE**

The Chrome Device Management licence is useful when you need to execute certain features on your Chrome device from a distance. You can control the application that is running, monitor device statuses and initiate a full lock down. AOPEN can provide you with the CDM licences.

▶ **EXTENDED WARRANTY**

Because we believe in the quality and reliability of our products, we offer our clients an extended warranty service. Chrome offers up to five years warranty.



eTILE RANGE

All-in-one touch solutions

eTILE RANGE

▶ **All-in-one touch solution**

The eTILE range consists of a display range that includes the computing device. This means no extra cables, keyboards or mice are needed to run the device.

▶ **Available in 15, 19 and 22 inch**

The eTILE range offers several variations in type, but also in screen size. The range currently consists of 15, 19 and 22 inch solutions.

▶ **Tamperproof**

The eTILE range is created for commercial environments. Therefore, the solution must be tamperproof. For the eTILE range this means there is cable management and a cable cover, and the buttons are hidden.

▶ **Windows services apply**

AOPEN offers general Windows images, pre-imaging services, the creation of custom images, customised BIOS, multi-bundle images and Windows recovery sticks.

▶ **Professional grade hardware**

The AOPEN eTILE range is created for 24/7 use in tough environments. Dusty clothing stores and greasy restaurants are no issue because of its design.



APPLICATIONS

eTILE Range



Smart Kiosk in Retail

If a product is not available in store, you can place the order at a kiosk. Click-and-collect services are available in a variety of stores, or outside a store for 24/7 use. In commercial environments it is key that hardware can be operated by different target groups, is tamperproof and available 24/7.

Smart Vending in Logistics

The delivery of online packages can be difficult. With smart vending in logistics this issue is instantly solved. Place an order online, select a vending point near you and receive a pick up code. AOPEN hardware is the right fit because these lockers are mostly placed outdoors and must run 24/7.



Point of Sale

Choose to use our hardware with a POS system that can be used by employees. The AOPEN hardware is the perfect solution for this situation. With highly diverse connectivity, different devices and IP65 grade panels, our all-in-one touch displays are able to cope with tough situations like these.

Smart Kiosk for QSR

These self-service ordering kiosks create an interactive method for customers to use when ordering. They select the items they want to purchase, enter special requirements and receive a table stand with a tracker. Via a screen in the kitchen, staff knows where the order should be served.





Smart Vending in Retail

There is an upcoming trend in vending machines which dispense underwear, socks or other small products. This is a fun way to emphasize sales of small, everyday items. In commercial environments it is key that hardware can be operated by different target groups, is tamperproof and available 24/7.

Background Music

Music is a must for many commercial environments, like retail, leisure and restaurants. Create a digital experience where guests can play music via a touchscreen, or even via a connected app and let the media player do the work. It is like an old-fashioned jukebox, but one that fits into our digital era.



Way finding

For big buildings, shopping malls or trade fairs, way finding kiosks are often placed to ensure people know where to find a shop, a meeting room or an exhibitor. For this solution an all-in-one touch screen ensures easy implementations. The AOPEN Chromebase range is the perfect fit here.

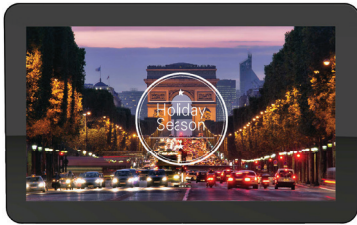
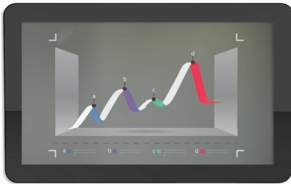
Check-in systems

An example of a smart kiosk is the registration kiosk. This solution creates a clear overview of the whereabouts of students, staff and visitors. The information can be used for performance evaluation, to check up on maximum capacity, or an efficient evacuation in case of an emergency.

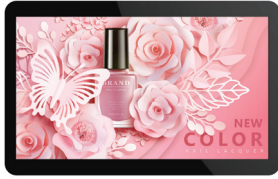


Device Specs

eTILE



eTILE-X15		eTILE-X19
Summary	15 Inch, all-in-one interactive touch solution with protective bezel	19 Inch, all-in-one interactive touch solution with protective bezel
Dimensions (WxHxD)	395.1(W) x 244.6(H) x 38(D)mm	492.6(W) 306.6(H) x x 40.8(D)mm
Panel	Resolution	15.6" 1920 x 1080 (16:9)
	Brightness	250 NITS
	Panel Type	TN
	Viewing Angle	160/160
	Response Time	25ms
Weight	3.6kgs	6kgs
Webcam	-	-
Watchdog Timer	1 ~ 255 SEC./ min	1 ~ 255 SEC./ min
AiCU	-	-
CPU	Intel® Celeron® Processor N Series (Quad Core)	Intel® Celeron® Processor N Series (Quad Core)
Memory	Channel	Dual Channel
	Type Channel	DDR3L x 2
	Data Rate	1333 MHz
	Max Memory	8G
Graphics	Chip	Integrated Intel® CPU (GMA HD series)
Expansion Slot	m.2 Slot	-
	mSATA	x 2
Audio	Type	Realtek HD Audio Codec ALC269
	Channel	Stereo
LAN	Chip	Single Intel Gigabit Ethernet
	Speed	10/100/1000
Kensington Lock	-	-
Side Panel I/O	Hidden Power Button	x 1
Touch Panel		Multi Touch PCT
System I/O	DC 19V/20V Jack	x 1
	HDMI Out Port	x 1
	USB 2.0 Port	x 4
	USB 3.0 Port	-
	RJ45 LAN Jack	x 1
	COM Port	x 1
	Audio	x 1
	Line-Out	
	Mic-In	x 1
	WiFi Antenna	Embedded Antenna
CPU Thermal Module	AOPEN Fanless Design	AOPEN Fanless Design
IP Grade	IP65	IP65
Adapter	90W/19V	90W/19V
Input Voltage	AC 100 ~ 240V	AC 100 ~ 240V
Environment	MTBF	50,000hrs
	Operating Temp.	0 ~ 40°C (32 ~ 104°F)
	Storage Temp.	-20 ~ 60°C (-4 ~ 140°F)
	Relative Humidity	90% RH (40°C Non-Condensing)



eTILE 15M-FB	eTILE 19M-FB	eTILE 22M-FB
15 Inch value range all-in-one touch solution	19 Inch value range all-in-one touch solution	22 Inch value range all-in-one touch solution
380.5(W) x 230(H) x 36.45(D)mm	448(W) x 284(H) x 30.4(D)mm	526(W) x 333.4(H) x 33(D)mm
15.6" 1920 x 1080 (16:9)	18.5" 1366 x 768 (16:9)	21.5" 1920 x 1080 (16:9)
400 NITS	250 NITS	250 NITS (700nits by project support)
AHVA	TN	VA
178/178	170/160	178/178
25ms	5ms	18ms
3.7kgs	5kgs	6kgs
-	-	-
1 ~ 255 SEC./ min	1 ~ 255 SEC./ min	1 ~ 255 SEC./ min
-	-	-
Intel® Celeron® Processor N Series (Quad Core)	Intel® Celeron® Processor N Series (Quad Core)	Intel® Celeron® Processor N Series (Quad Core)
Dual Channel	Dual Channel	Dual Channel
DDR3L x 2	DDR3L x 2	DDR3L x 2
1333 MHz	1333 MHz	1333 MHz
8G	8G	8G
Integrated Intel® CPU (GMA HD series)	Integrated Intel® CPU (GMA HD series)	Integrated Intel® CPU (GMA HD series)
-	-	-
x 2	x 2	x 2
Realtek HD Audio Codec ALC269	Realtek HD Audio Codec ALC269	Realtek HD Audio Codec ALC269
Stereo	Stereo	Stereo
Single Intel Gigabit Ethernet	Single Intel Gigabit Ethernet	Single Intel Gigabit Ethernet
10/100/1000	10/100/1000	10/100/1000
x1	x1	-
x 1	x 1	x 1
Multi Touch PCT	Multi Touch PCT	Multi Touch PCT
x 1	x 1	x 1
x 1	x 1	x 1
x 4	x 4	x 8
-	-	-
x 1	x 1	x 1
x 4 RJ50	x 4 RJ50	x 4 RJ50
x 1	x 1	x 1
x 1	x 1	x 1
Embedded Antenna	Embedded Antenna	Embedded Antenna
AOPEN Fanless Design	AOPEN Fanless Design	AOPEN Fanless Design
IP65	IP65	IP65
65W/19V	65W/19V	90W/19V
AC 100 ~ 240V	AC 100 ~ 240V	AC 100 ~ 240V
50,000hrs	50,000hrs	50,000hrs
0 ~ 40°C (32 ~ 104°F)	0 ~ 40°C (32 ~ 104°F)	0 ~ 40°C (32 ~ 104°F)
-20 ~ 60°C (-4 ~ 140°F)	-20 ~ 60°C (-4 ~ 140°F)	-20 ~ 60°C (-4 ~ 140°F)
90% RH (40°C Non-Condensing)	90% RH (40°C Non-Condensing)	90% RH (40°C Non-Condensing)

Device Specs

eTILE



eTILE 19M-FP		eTILE 15M-FW	eTILE 19M-FW
Summary		19 Inch high-end all-in-one touch solution	15 Inch high-end all-in-one touch solution
Dimensions (WxHxD)		448(W) x 284(H) x 30.4(D)mm	390.5(W) x 240(H) x 36.45(D)mm
Panel	Resolution	18.5" 1366 x 768 (16:9)	15.6" 1920 x 1080 (16:9)
	Brightness	250 NITS	400 NITS
	Panel Type	TN	VA
	Viewing Angle	170/160	178/178
	Response Time	5ms	25ms
Weight		5kgs	3.7kgs
Webcam		-	2MP
Watchdog Timer		1 ~ 255 SEC./ min	1 ~ 255 SEC./ min
AiCU		AiCU 2.0	-
CPU		Intel® Celeron® Processor J Series (Quad Core)	5th Generation Intel® Core™ (i3, i5)
Memory	Channel	Dual Channel	Dual Channel
	Type Channel	DDR3L x 2	DDR3L x 2
	Data Rate	1333/1600 MHz	1333/1600 MHz
	Max Memory	8G	16G
Graphics	Chip	Integrated Intel® CPU (HD Graphics 500)	Integrated Intel® CPU (GMA HD series)
Expansion Slot	m.2 Slot	x 3	x 1
	mSATA	-	x 2
Audio	Type	Realtek HD Audio Codec ALC269	Realtek HD Audio Codec ALC269
	Channel	Stereo	Stereo
LAN	Chip	Single Intel Gigabit Ethernet	Single Intel Gigabit Ethernet
	Speed	10/100/1000	10/100/1000
Kensington Lock		x1	-
Side Panel I/O	Hidden Power Button	x 1	x 1
Touch Panel		Multi Touch PCT	Multi Touch PCT
System I/O	DC 19V/20V Jack	x 1	x 1
	HDMI Out Port	x 1	x 1
	USB 2.0 Port	-	-
	USB 3.0 Port	x 4	x 4
	RJ45 LAN Jack	x 2 (AiCU x1)	x 1
	COM Port	x 4 RJ50	x 4 RJ50
	Audio	Line-Out	x 1
		Mic-In	x 1
	WiFi Antenna	Embedded Antenna	Embedded Antenna
CPU Thermal Module		AOPEN Thermal Design	AOPEN Thermal Design
IP Grade		IP65	IP65
Adapter		90W/19V	90W/19V
Input Voltage		AC 100 ~ 240V	AC 100 ~ 240V
Environment	MTBF	50,000hrs	50,000hrs
	Operating Temp.	0 ~ 40°C (32 ~ 104°F)	0 ~ 40°C (32 ~ 104°F)
	Storage Temp.	-20 ~ 60°C (-4 ~ 140°F)	-20 ~ 60°C (-4 ~ 140°F)
	Relative Humidity	90% RH (40°C Non-Condensing)	90% RH (40°C Non-Condensing)



eTILE 22M-FW

22 Inch high-end all-in-one touch solution

526(W) x 333.4(H) x 33(D)mm

21.5" 1920 x 1080 (16:9)

250 NITS (700nits by project support)

VA

178/178

18ms

6kgs

2MP

1 ~ 255 SEC./ min

-

5th Generation Intel® Core™ (i3, i5)

Dual Channel

DDR3L x 2

1333/1600 MHz

16G

Integrated Intel® CPU (GMA HD series)

x 1

x 2

Realtek HD Audio Codec ALC269

Stereo

Single Intel Gigabit Ethernet

10/100/1000

-

x 1

Multi Touch PCT

x 1

x 1

x 4

x 4

x 1

x 4 RJ50

x 1

x 1

Embedded Antenna

AOPEN Thermal Design

IP65

90W/19V

AC 100 ~ 240V

50,000hrs

0 ~ 40°C (32 ~ 104°F)

-20 ~ 60°C (-4 ~ 140°F)

90% RH (40°C Non-Condensing)



eTILE-X15

All-in-one interactive touch solution

The eTILE-X15 is a fanless and solid-state all-in-one touch display. This multi-touch display can be integrated in various demanding commercial settings, such as retail, hospitality and corporate. Because of the protective bezel and tamperproof design it is also perfectly suited for an extreme environment such as industry.



Intel® Celeron® Processor N Series (Quad Core)



15,6", 1920 x 1080px, 250 nits, TN panel



Fanless and solid-state



Protective bezel

eTILE-X19

All-in-one interactive touch solution

The eTILE-X19 is a fanless and thin 19.5" all-in-one touch display. Developed with digital signage and kiosk in mind, this multitouch display can be integrated in various commercial settings such as retail, hospitality and industrial environments. Its sleek design and modular features make this eTILE-X perfect for any scenario.



Intel® Celeron® Processor N Series (Quad Core)



19,5", 1920 x 1080px, 250 nits, VA panel



Fanless and solid-state



Protective bezel





eTILE 15M-FB

Value range all-in-one touch solution

The eTILE 15M-FB is a fanless and solid-state 15.6" all-in-one touch device. Developed with POS and smart kiosk in mind, this multitouch system can be integrated in various retail settings. The eTILE is very reliable and quiet because it's fanfree and it doesn't have any moving parts.



Intel® Celeron® Processor N Series (Quad Core)



15,6", 1920 x 1080px, 400 nits, AHVA panel



Fanless and solid-state



Value range price/quality ratio

eTILE 19M-FB

Value range all-in-one touch solution

The eTILE 19M-FB is a fanless 18.5" all-in-one touch display. Developed with POS in mind, this multitouch PC tile can be integrated in various retail settings. Combining a modern design with practical features such as various I/O Ports make this eTILE the perfect retail solution.



Intel® Celeron® Processor N Series (Quad Core)



18,5", 1366 x 768px, 250 nits, TN panel



Fanless and solid-state



Value range price/quality ratio





eTILE 22M-FB

Value range all-in-one touch solution

The eTILE 22M-FB is an ultra-thin interactive all-in-one touch display. Based on Intel® Celeron processor N series (Quad Core), this powerful dynamic touch device will enhance the interactive experience. Furthermore, it incorporates a Full HD display and port cover to minimise user tampering. Purposely built for 24/7 use in kiosks.



Intel® Celeron® Processor N Series (Quad Core)



21,5", 1920 x 1080px, 250 nits, VA panel



Fanless and solid-state



Value range price/quality ratio

eTILE 19M-FP

Mid range all-in-one touch display

The eTILE 19M-FP is powered by the Intel® Celeron® Processor J Series (Quad Core), has a 18,5 inch touch screen and runs different applications. It is tamperproof because of its cable cover, hidden I/O ports and VESA mount. This fanless and solid-state device fits perfectly in a kiosk, because of its edge-to-edge glass. It also looks great in any environment as stand alone solution.



Intel® Celeron® Processor J Series (Quad Core)



18,5", 1920 x 1080px, 250 nits, VA panel

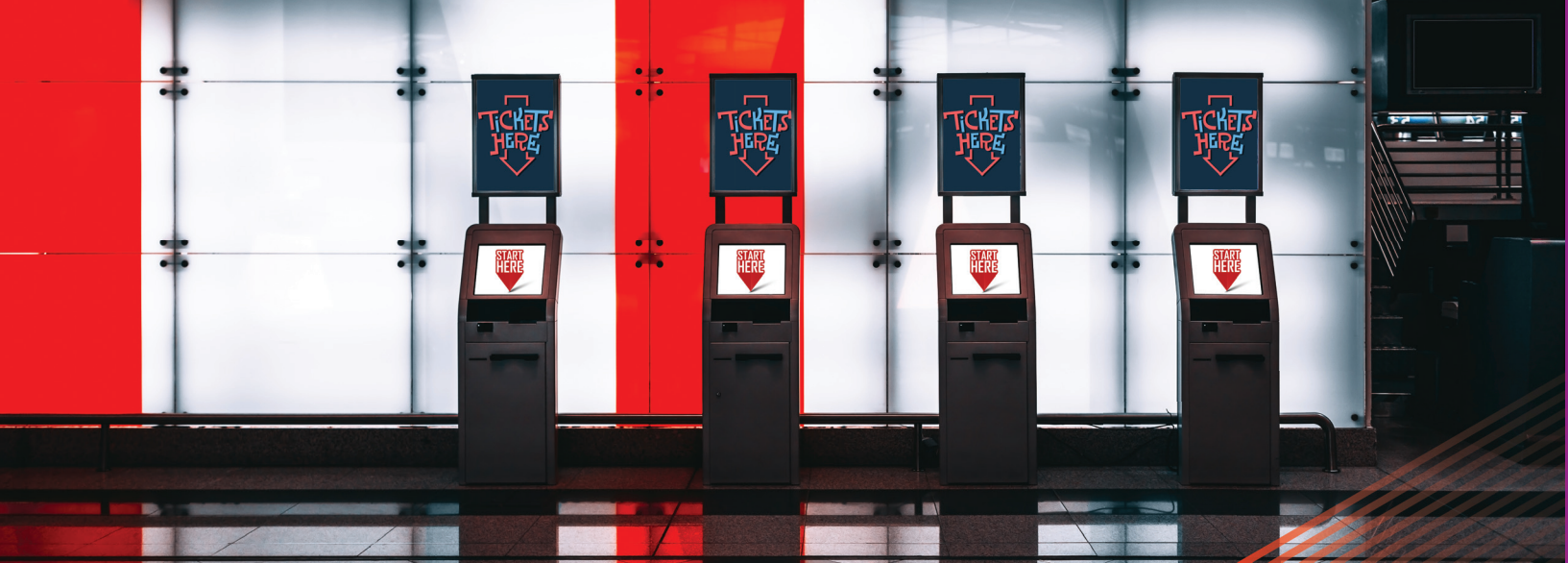


Fanless and solid-state design



Edge -to-edge glass





eTILE 15M-FW

High end all-in-one touch solution

The eTILE 15M-FW is an ultra-thin interactive all-in-one touch display, specially designed for commercial use in, for example, retail environments. With good integration possibilities due to its exterior and tamperproof design this eTILE can be integrated into any commercial setting. This high-end device can easily run tough applications and create interactive experiences.



5th Generation Intel® Core™, available in i3 and i5



15,6", 1920 x 1080px, 400 nits, AHVA panel



Actively cooled



Edge-to-edge glass with webcam on front panel

eTILE 19M-FW

High-end all-in-one touch solution

The eTILE 19M-FW is an ultra-thin interactive all-in-one touch display. Based on Intel's® 5th Generation Intel® Core™ (i3, i5), this powerful dynamic touch device will enhance the interactive experience. Furthermore, it incorporates a HD Ready display, Full HD webcam and port cover to minimise user tampering. Purposely built for 24/7 use in kiosk environments.



5th Generation Intel® Core™, available in i3 and i5



18,5", 1366 x 786px, 250 nits, TN panel



Actively cooled



Edge-to-edge glass with webcam on front panel





eTILE 22M-FW

The eTILE 22M-FW is an ultra-thin interactive all-in-one touch display. Based on the 5th Generation Intel® Core™ (i3, i5), this powerful dynamic touch device will enhance the interactive experience. Furthermore, it incorporates a Full HD display, Full HD webcam and port cover to minimise user tampering. Purposely built for 24/7 use in kiosk environments.



5th Generation Intel® Core™, available in i3 and i5



21,5", 1920 x 1080px, 250 nits, VA panel



Actively cooled



Edge-to-edge glass with webcam on front panel

eTILE SERVICES

AOPEN add on value

AOPEN Services that fit your commercial solution. Our objective is to optimise the product life cycle through value-added services for our customers, while promoting the integration of business services.

▶ **GENERAL WINDOWS IMAGE**

AOPEN provides you with general Windows images. We work with Windows 10 IoT because this OS serves the general demand in the market today. This hardened image is optimised for digital signage and is based on our many years of experience.

▶ **PRE-IMAGING SERVICE**

Our pre-imaging service makes sure a general, custom, multi-bundle or your own image will be installed on your devices. This enables you to divide your time elsewhere.

▶ **AMT PROVISIONING**

AMT is hardware and firmware technology for our of band remote control. We can pre-provision AMT capable devices for you.

▶ **CUSTOMISED BIOS**

To make the installation of our devices easier, we are able to provide you with default settings in the BIOS of your hardware. The settings are completely tailored to your wishes and can vary from pre-set passwords, memory size, company logo during POST (Power On Self Test) and many other settings to personalise your device.

▶ **MULTI-BUNDLE IMAGE**

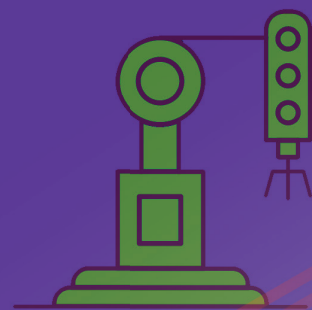
Our multi-bundle image is an optimised Windows 10 IoT image with multiple applications for digital signage and surveillance. The only thing left is selecting the software package you want to install.

▶ **CUSTOM IMAGE**

AOPEN provides an Operating System adapted to your wishes for your devices. This means you don't have to install, configure and optimise the Operating System for each device. Furthermore, this image will not change prior to your approval and/or request. The result is a reliable, time- and cost saving OS for your system.

▶ **WINDOWS RECOVERY STICK**

In the unlikely case a system crashes, a recovery stick can easily reset the system to its default settings. A recovery stick contains the Operating System as it was during production and makes sure your system will be recovered in approximately 10 minutes after restarting it.



No issues
detected

SMART VISION

DEV Series

DEV SERIES

► **Professional grade hardware**

Designed for 24/7 use, the crucial factor for video surveillance, the rugged design will cope with the most demanding environments.

► **Created for Smart Vision solutions**

This includes solutions for smart surveillance, retail analytics, industrial automation and operations.

► **Powered by Intel® desktop processors**

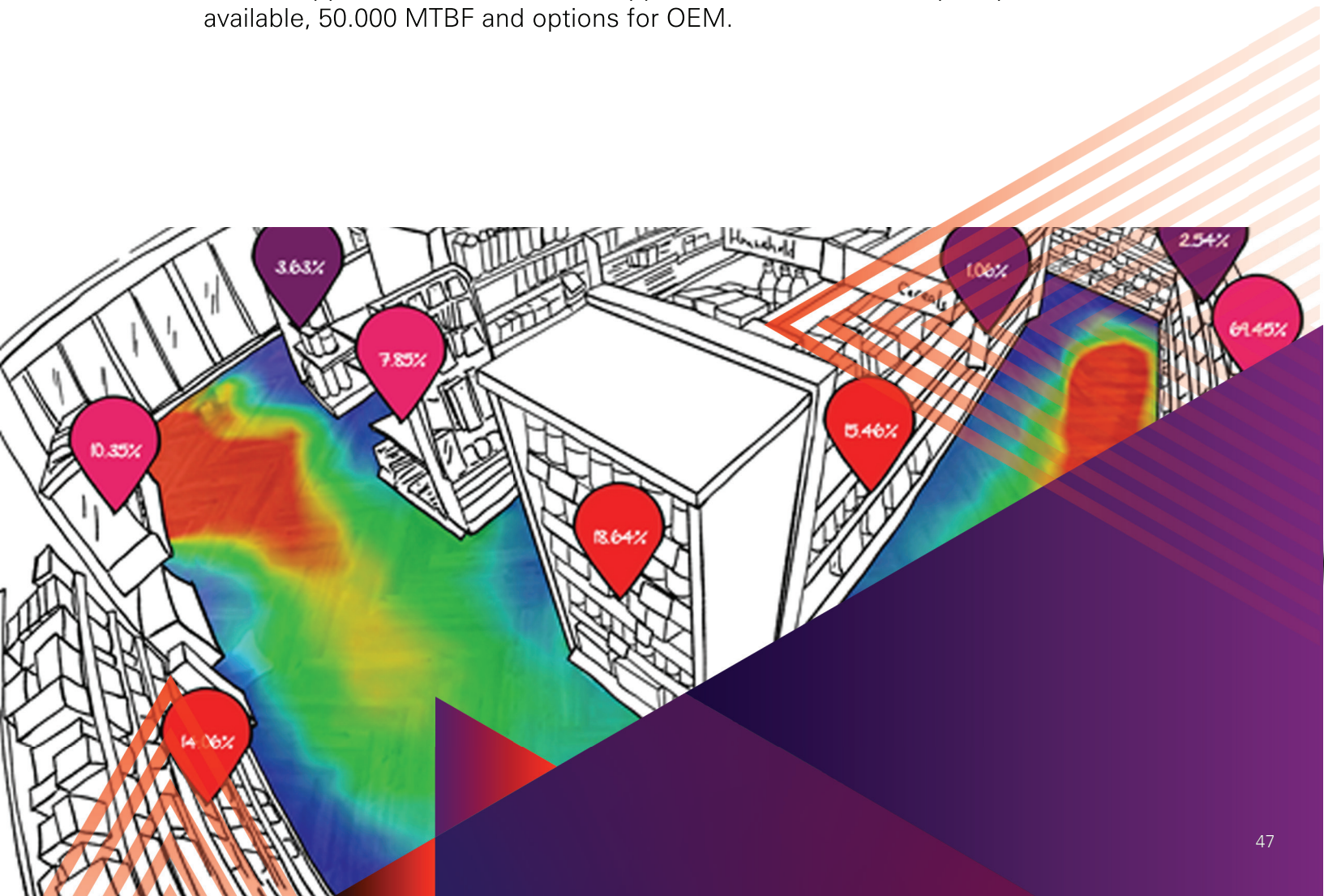
The DEV series is powered by an Intel® desktop processor, instead of the mobile CPU's the original Digital Engines run on, providing a more powerful solution to the field.

► **Dedicated graphics card added to the DEV7610**

The DEV7610 is equipped with an NVIDIA graphics card. This ensures the computing device easily runs high-end graphics and enables deep learning and inference solutions.

► **AOPEN add on value**

Global support with local EU tech support, RMA services and spare parts available, 50.000 MTBF and options for OEM.



APPLICATIONS

DEV Range

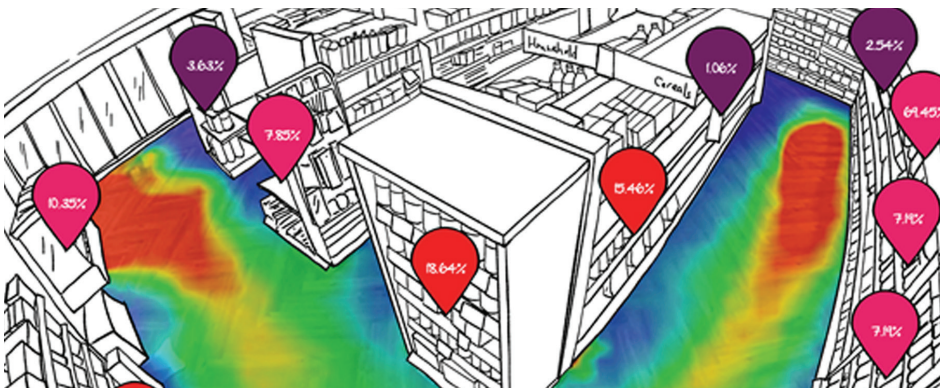


Video wall applications

The DEV7610-X6 is the one player that is not dedicated to smart vision. Because of its six outputs this player is the perfect fit for video wall solutions. The DEV7610-X6 includes a powerful graphics card that ensures your video wall will run smoothly. Interact, attract or promote news items or items in store.

Facial analytics

With facial analytics there are multiple solutions possible: access control, analytics and targeted signage are within reach when it comes to smart vision. Let the DEV do the number crunching and display targeted content at the same time. You can also make sure you are targeting the right audience with your store.



Smart Retail

Heatmaps can be extremely useful to retailers when it comes to learning about shops, customers and collections. This solution creates valuable insights for retailers. For high-end analytics the combination of a high-end CPU and a good GPU is necessary. The DEV series ensures this, and is therefore the best option.

Licence plate recognition

Licence plate recognition is useful for parking garages and governments. Detect who is entering your garage, or review which car is using a toll road. Licence plate recognition is possible when combining the right camera with the correct computing device. The DEV series is well suited for this set-up.





Digital Signage in Industrial environments

Within industrial environments safety is key. With digital signage solutions for industrial environments you can easily communicate with your staff in case of emergency. You can also make sure system errors are automatically detected to create an easier and failsafe workflow.

Smart Manufacturing

Industrial process automation contains numerous possibilities to increase efficiency. Think about checking packages via inference instead of manpower. Recognise objects in the process and learn if they meet the quality standard. If not, the solution will kick the product out of the process.



Smart Vision in Logistics

Recognise objects when they pass by this smart solution. The camera is able to recognise different objects and different sizes. The solution sorts them automatically. Think of post sorting venues, where much manpower is required daily. What if this process was automated and therefore, faster, and free from human error?

Control Room

After setting up your smart surveillance solution, you must monitor your cameras. Within big organisations, or critical environments such as government set-ups, a control room is the answer to your manpower issue. Combine multiple screens in order to ensure your staff can easily manage the captured images.



Device Specs

DEV



DEV5400		DEV7610-X6		DEV7610			
Summary		Optimal performance computing engine		Powerful media player for video wall solutions		High-performance computing engine	
Dimensions (WxHxD)		180 (W) x 195(H) x 43(D)mm		300(W) x 212(H) x 60(D) mm		300(W) x 212(H) x 60(D) mm	
Volume (Liter)		1.5L		3.8L		3.8L	
Weight	Nett	1 kgs / 2.20 lbs		2.6 kgs / 5.73 lbs		2.6 kgs / 5.73 lbs	
	Gross	1.7 kgs / 3.75 lbs		3.8 kgs / 8.37 lbs		3.8 kgs / 8.37 lbs	
CPU		7th Generation Intel® Core™ (i3, i5, i7)		8th Generation Intel® Core™ (i5)		8th Generation Intel® Core™ (i5)	
AiCU		-		-		-	
Memory	Channel	Single Channel		Dual Channel		Dual Channel	
	Type	DDR3L SO DIMM x1		DDR4 SO DIMM x2		DDR4 SO DIMM x2	
	Data Rate	1333/1600		2400/2666		2400/2666	
	Max Memory	8GB		32GB		32GB	
Graphics	Chip	Intel HD530 / HD630		Intel UHD630		Intel UHD630	
Expansion Slot		Mini PCI-E supports WIFI or Intel Movidius AI accelerator Mini PCI-E supports mSATA		Default SKU AMD Radeon E8860 M.2 2280 PCI-E SSD Slot M.2 2242 PCI-E Slot M.2 2280 Intel Optane Memory Slot		Default SKU Nvidia® GeForce® GTX 1050Ti PCIe x16 slot x 1 M.2 2242 PCI-E slot x 1	
Audio type		Realtek HD Audio ALC662-VD		Realtek HD Audio ALC269 5.1		Realtek HD Audio ALC269 5.1	
LAN	Chip	Realtek Gigabit Ethernet		Realtek Gigabit Ethernet		Realtek Gigabit Ethernet	
	Speed	10/100/1000 Mbps		10/100/1000 Mbps		10/100/1000 Mbps	
Storage	2.5" Bay	2.5" HDD/SSD x 1		2.5" HDD/SSD x1		2.5" HDD/SSD x1	
	mSATA	mSATA SSD x 1		-		-	
	M.2 SSD	-		M.2 2280 SSD x 1 M.2 2280 Intel Optane Memory x 1		M.2 2280 SSD x 1 M.2 2280 Intel Optane Memory Slot x 1	
Front panel I/O	USB 2.0 Port	-		-		-	
	USB 3.0 Port	-		x 1		x 1	
	Others	-		USB 3.1 (x 1), USB-C (x 1)		USB 3.1 (x 1), USB-C (x 1)	
DC Jack		x 1 (Front panel)		x 1 (Rear panel)		x 1 (Rear panel)	
Rear panel I/O	VGA Port	x 1		-		-	
	HDMI Port	x 1		x 1 (HDMI 1.4)		x 2	
	DisplayPort	-		x 6 (Mini DP on expansion slot), x 1 DisplayPort		x 2	
	USB 2.0 Port	x 2		x 2		x2	
	USB 3.0 Port	x 4		x 2		x 2	
	eSATA Port	-		-		-	
	RJ45 LAN	x 1		x 1		x 1	
	COM Port	x 1		-		-	
	Antenna Hole	-		x 2		x 2	
	Kensington Lock	-		-		-	
Audio	Line-out	x 1 (Rear panel)		x 1 (Front panel)		x 1 (Front panel)	
	Mic-in	x 1 (Rear panel)		x 1 (Front panel)		x 1 (Front panel)	
WiFi		Optional		Optional		Optional	
Bluetooth		Optional		Optional		Optional	
CPU Thermal Module		AOPEN Thermal Module		AOPEN Thermal Module		AOPEN Thermal Module	
WatchDog Timer		1 ~ 255 sec/min		N/A		N/A	
Input Voltage		19V / 120W		19V/180W		19V / 180W	
Adapter		AC 100 240V		AC 100 ~ 240 V		AC 100 ~ 240 V	
Environment	MTBF	50,000hrs		50,000hrs		50,000hrs	
	Operating temp.	0 ~45°C (32 ~ 113°F)		0~45°C (32~113°F)		0 ~45°C (32 ~ 113°F)	
	Storage temp.	-20~60°C (-4~140°F)		-20~60°C (-4~140°F)		-20~60°C (-4~140°F)	
	Relative Humidity	95% RH (50°C Non-Condensing)		95% RH (50°C Non-Condensing)		95% RH (50°C Non-Condensing)	

10 REASONS WHY

AOPEN hardware for smart vision

▶ **Professional grade hardware**

Designed for 24/7 use, the crucial factor for video surveillance, the rugged design which will even cope with the most demanding environments

▶ **Enhanced stability**

Purposely built for its OS and environment. The lower power consumption ensures a longer lifecycle

▶ **Extremely flexible integration**

Combine to perfection with the Digital Engine, the eTILE and other supporting devices

▶ **Unique platform**

Small form factor and modular platform for multi-site integrations

▶ **AOPEN added value**

Global support with local EU tech support, RMA services and spare parts available, 50.000 MTBF and options for OEM

▶ **Wide hardware range**

Models available in a variety of ranges, Fanless designs, CPU options from Celeron up to XEON

▶ **Designed for Smart Vision**

The DEV series is specifically designed for smart vision with an enhanced GPU and multiple outputs

▶ **An open platform**

Combine video surveillance, video analytics and digital signage all together with the Engine Core

▶ **Certified and pre-tested**

With leading Video Management Software & Analytics software vendors

▶ **Optional services**

Pre-installation of software and the possibility for a customised Windows Embedded Image and extended warranty options





DEV5400

Optimal performance computing engine

The DEV5400 is a compact computing solution for visual processing applications. The DEV5400 easily controls applications for (retail) analytics and basic industrial applications, because of the 7th generation desktop processor with integrated graphics. The DEV5400 is designed for 24/7 use and supports high frame rate cameras.



7th Generation Intel® Core™, available in i3, i5 and i7



1x Full HD



Actively cooled



Desktop CPU

DEV7610

High-performance computing engine

The DEV7610 combines Intel's latest 8th generation desktop processor with an Nvidia® graphics card to create a high performance computing engine. This computing engine is perfect for analytics. The Nvidia graphics card supports the DEV7610 to easily drive applications for 3D digital signage, facial recognition, video analytics and industrial processes.



8th Generation Intel® Core™, available in i5



3x UHD (4k) @60Hz



Actively cooled



NVIDIA GTX GeForce 1050 Ti



DEV7610-X6

Powerful media player for video wall solutions

The DEV7610-X6 is a high-end player for multi-screen video wall solutions. The new housing with an aluminium front was designed for unobtrusive installation in commercial environments. Graphics are provided by an AMD Radeon™ E8870 GPU with six mini DisplayPort connections, while an Intel® Core™ CPU powers both the onboard DisplayPort 1.2 and HDMI 1.4 ports.



8th Generation Intel® Core™, available in i5



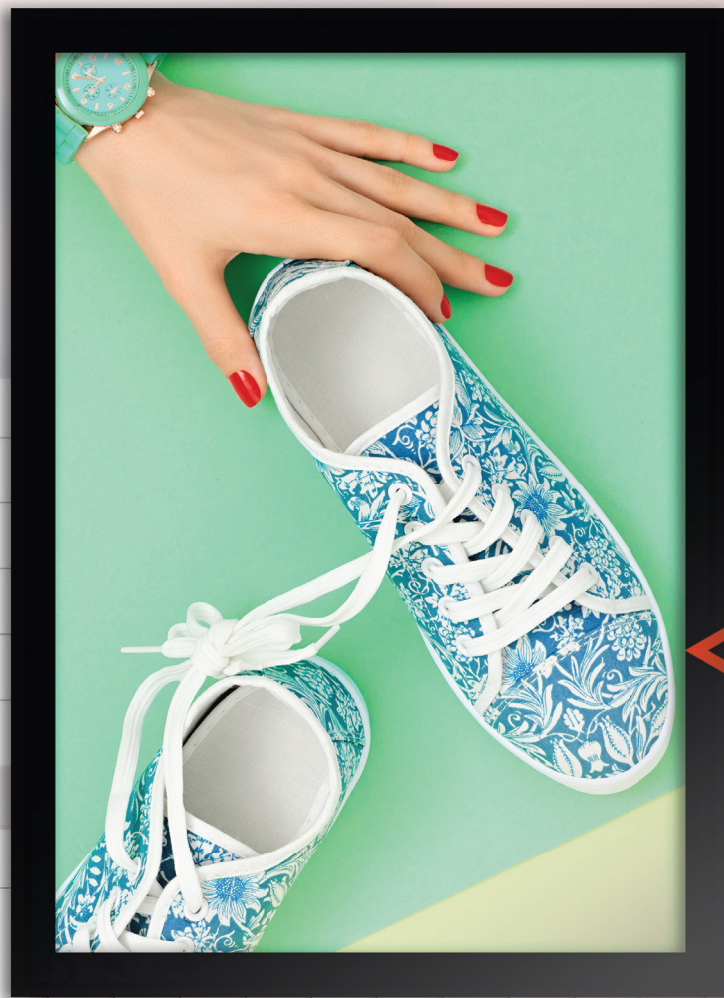
6x UHD (4k) @ 60Hz



Actively cooled



AMD Radeon GPU with six mini DisplayPort connections



MEDIA ENGINE

and AiSage

MEDIA ENGINE & AiSage

▶ **One year warranty**

One year warranty is granted for the media players within this range. Being a low range device, these two are different from the Digital Engine and Chrome ranges.

▶ **Simple digital signage**

Create simple and easy digital signage by installing the media engine or the AiSage in your solution. Both media players include two outputs which are the backbone of your solution

▶ **Windows or Android based**

Where the ME57U is based on Windows, your perfect Android based solution can be found by using the AiSage.



APPLICATIONS

Media Engine

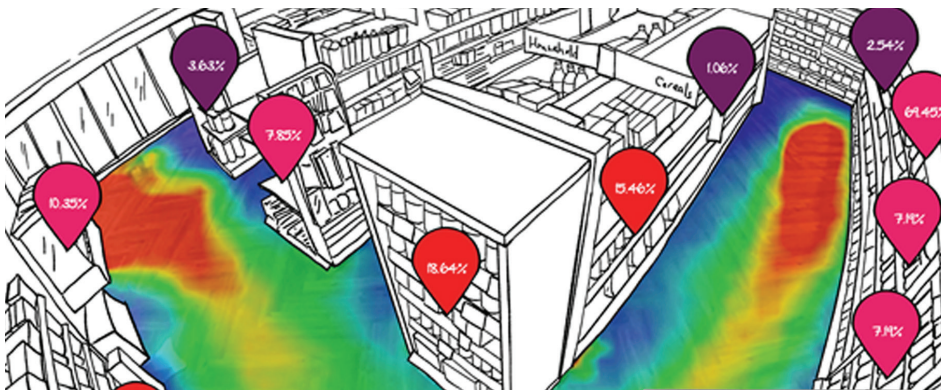


Simple digital signage

Drive up to two independent displays and create a digital experience in store, in a corporate environment or within educational environments. Display a simple signage solution which shows, for example, the new offer of the week, changed classrooms or a website or an up to date twitter feed of your company.

Targetted digital signage

The AiSage includes a camera that will process the images from the cam to the computing device. The device will recognise who is watching the screen. Therefore, your digital signage can be adjusted based on who is walking by. For example: different perfumes for guys and girls, or a toy for a younger child.



Retail Analytics

Heatmaps can be extremely useful to retailers when it comes to learning about shops, customers and collections. This solution creates valuable insights for retailers. A combination of a high end CPU and a good GPU is necessary. The Media Engine is therefore perfect for simple retail analytics.

Kiosk solutions

Interact, attract, promote and inform your customers in all shops with a few simple clicks. Use a kiosk signage screen for windows to attract passersby. Promote a new collection or upscale the attention for the sale with digital signage. Both the Media Engine and the AiSage are capable of running in a retail environment.



Device Specs

MEDIA ENGINE



AiSage		ME57U
Summary		
Android based, value range media player with integrated camera		Value range, two output media player
Dimensions (WxHxD)		320(W) x 55(H) x 25.9(D)
Volume (Liter)		210(W) x 40(H) x 113(D)
Weight	Nett	0.45L
	Gross	0.77L
CPU		
ARM® Dual Core Cortex-A72 + ARM® Quad Core Cortex-A53		7th Generation Intel® Core™ (i3, i5, i7)
Being Device Management		
BDM included		-
Memory	Channel	Single Channel
	Type	Dual Channel
	Data Rate	DDR3L
	Max Memory	DDR4
Graphics		
Mali-T860		Intel® HD Graphics 620
Expansion Slot		
-		M.2 2280, M.2 2230
Audio type		
-		Integrated high-definition sound
LAN	Chip	Intel® WG1210AT
	Speed	Intel® Giga LAN
Storage	2.5" Bay	10/100/1000
	mSATA	-
	M.2 SSD	-
	USB 2.0 Port	-
Front panel I/O	USB 3.0 Port	-
	Others	-
	HD camera (720P/1080P)	USBC (x 1), USB3.1 (x 1), Audio combo port (x 1)
DC Jack		
x 1 (With screw)		x 1 (Rear panel)
Rear panel I/O	VGA Port	-
	HDMI Port	-
	DisplayPort	x 1
	USB 2.0 Port	x 1 (Mini)
	USB 3.0 Port	-
	eSATA Port	-
	RJ45 LAN	-
	COM Port	x 1
	Antenna Hole	-
	Kensington lock	-
	Others	-
	MicroSD Expansion slot	USB 3.1 (x 1)
Audio	Line-out	-
	Mic-in	-
WiFi		
Buit-in 2.4/5G		-
Bluetooth		
BT4.0LTE		-
CPU Thermal Module		
AOPEN Fanless Design		AOPEN Fanless Design
WatchDog Timer		
Software		-
Input Voltage		
12V / 36W		19V
Adapter		
AC 100 ~ 240V		AC 100 ~ 240V
Environment	MTBF	50.000 hrs
	Operating temp.	40.000 hrs
	Storage temp.	-10 ~50°C (14 ~ 122°F)
	Relative Humidity	5~35°C (41 ~ 95°F)
-20 ~80°C (-4 ~ 176°F)		-20 ~60°C (-4 ~ 140°F)
10%~90%		90% RH (35°C Non-Condensing)



AiSage


Media player with built-in webcam



The AiSage is a UHD (4k) media player that integrates a webcam into its design. The device has to be placed on top of the display where the webcam is positioned perfectly to run solutions that relate to analytics. For example, it's possible to adjust the content on the screen based on who is watching. The AiSage includes a content management system, a device management system and an audience measurement system.

arm ARM® Dual Core Cortex-A72 + Quad Core Cortex-A53

 1x UHD (4k) @60Hz

 Fanless design

aiSage Being Device Management included


Media Engine ME57U

Value range, two output media player

The Media Engine ME57U is a low-range media player. It easily runs UHD (4K) content on one screen, because of the 7th generation Intel® Core™ CPU, which is available in i3, i5 and i7. The Media Engine is different from the Digital Engine because of warranty, lifecycle and lifelines. However, this small new member of the hardware range has skills.

 7th Generation Intel® Core™, available in i3, i5 and i7

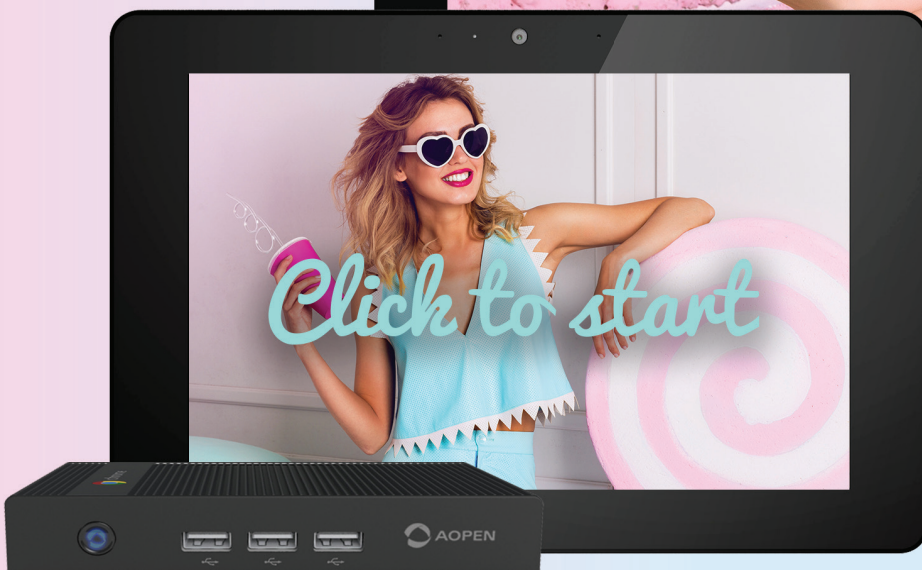
 1x UHD (4K) @60Hz (depending on CPU)

 Actively cooled

 Compact size



"AOPEN creates hardware for different solutions in different scenarios"





SUPPORTING DEVICES and Accessories



Consolidate multiple Digital Engine devices with the Engine Core. An innovative way to protect up to seven systems from dust and unwanted access, and simultaneously provide 19" rack mountability. The Engine Core also provides extra cooling and cable management. An Engine Core combined with AOPEN Digital Engine devices and the specially designed Digital Element Modules make it a secure, versatile, green IT powerstation.

Engine Core 200

Consolidate up to two Digital Engines



- + Chassis dimension: 449(W) x 65(H) x 305(D)mm
- + Detachable front handle for rack mount or stand alone use
- + Can be integrated into server racks
- + Material: SECC

Engine Core 300

Consolidate up to three Digital Engines

- + Chassis dimension: 190(W) x 195(H) x 380(D)mm
- + For stand alone use
- + Replaceable dust filter behind the front panel
- + Material: SECC

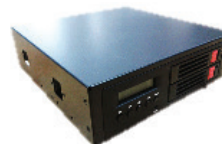


Engine Core 650

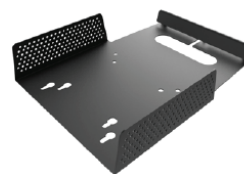
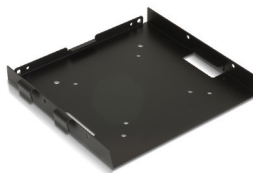
Consolidate up to six Digital Engines



- + Chassis dimension:
 - 481(W) x 177(H) x 587(D)mm (Rack mount, with handle)
 - 425(W) x 177(H) x 587(D)mm (Stand alone, without handle)
- + Detachable front handle for rack mount or stand alone use
- + Replaceable dust filter behind the front panel
- + Material: SECC



	RDM	Redundant power supply	Raid Bay 2,5"	Raid Bay 3,5"
Feature	Creates redundancy	Creates redundancy	For extra storage	For extra storage
Supported models	All Engine Core models	All Engine Core models	All Engine Core models	All Engine Core models



	VESA kit DEX	VESA kit VM02	VESA cabling VM05	Server sliding rail
Mountability	VESA standard	VESA standard	VESA Mounting	To mount EC to server rack
Supported models	DEX models	All computing devices Excl. DEX / DES / DEV	All computing devices excl. DEX / DES / DEV	Engine Core 650



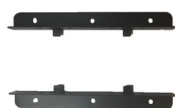
	DP to VGA cable	HDMI to VGA cable	Dust proof cover and filter
Feature	Converts Display Port to VGA	Converts HDMI to VGA	Replaces old magnetic dust filters
Supported models	All computing devices with Display Ports	All computing devices with HDMI	All computing devices with Fan excl. DEV



	Slim wall mount	Side mounting for Kiosk	WiFi and Bluetooth kit	Table stand
Mountability	VESA standard	To fit eTILE/Chromebase into kiosks	To create extra connectivity	From eTILE to table
Supported models	eTILE, eTILE-X, Chromebase Commercial and CrOS touch	eTILE and Chromebase Commercial	eTILE and eTILE-X	All-in-one and 2-in-1 solutions



	Floorstand	Floorstand	Floorstand	Recessed wall mount
Mountability	VESA standard	VESA standard	VESA Mounting	To integrate Chromebase mini into walls
Supported models	eTILE, eTILE-X, Chromebase Commercial and CrOS touch	eTILE, eTILE-X, Chromebase Commercial and CrOS touch	eTILE, eTILE-X, Chromebase Commercial and CrOS touch	Engine Core 650



	L brackets	Heavy Duty power supply	RJ50 - RS232 Cable	RJ50 - Mini Jack Cable
Feature	To mount the Chromebox mini	Run the Chromebox Commercial <-30 or >60	RJ50 to DB9 converter	RJ50 to 3,5mm Jack converter
Supported models	Chromebox Mini (other boxes it's included)	eTILE, eTILE-X, Chromebase Commercial and CrOS touch	eTILE, eTILE-X, Chromebase Commercial and CrOS touch	Engine Core 650



	RJ50 Combo
Feature	Converters combination
Supported models	eTILE, eTILE-X, Chromebase Commercial and CrOS touch

AOPEN EMEA
request@aopen.com

Stadionlaan 151-153
5246 JT Rosmalen
The Netherlands

Tel: (+31) 73 646 6400

WWW.AOPEN.COM



AOPEN

Bright Ideas Connected

The specifications depicted in this document may be subject to change without prior notice. Product images displayed are representative of use and for illustration purposes only. Ability to display content has many contributing factors including the software used. All trademarks are copyright of their respective owners. © AOPEN Inc. 2019. All rights reserved.